



ILLINOIS DEPARTMENT OF PUBLIC HEALTH
IDPH
PROTECTING HEALTH

Caring for the Unexpected Masses

Asylum Seeker/Migrant Response Healthcare Efforts

~Then and Now~

03 JAN 2023



Alicia Tate-Nadeau

**Governor's Homeland Security Advisor
Director, IEMA-OHS**



Sameer Vohra, MD, JD, MA (he/him/his)

**Director
Illinois Department of Public Health**



Agenda

- Setting the Stage
 - IEMA-OHS
 - IDPH
- Situation
 - Historic
 - Current
- Building a Framework of Response
- Healthcare for the Masses
 - Immediate
 - Trends/Planning Considerations
 - Lessons Learned
- Questions



Situation Synopsis

- **Mid-August 2022:** Received intel the State of Texas may start sending chartered migrant buses to Chicago.
- **Since August 31, 2022:** Nearly 30,000 people have been received.
- **As of January 4, 2023** there were 14,706 residents in city shelters.



Setting the Stage



- **Illinois is a home rule state.** Final Decisions for Tactical Operations are made at the local level.
- **Illinois Department of Human Services is the lead state agency for this operation.** All other state agencies support and aid in coordination of response.
- **IEMA-OHS is supporting this operation and providing coordination** across multiple facets of the operation
- **Many typical resources, plans, and traditional response framework were insufficient** for this type of an event due to the enduring nature and complexity

Setting the Stage



Public Health: Reaction and Response

- IDPH started working with sister state agencies—the Dept. of Human Services and Emergency Management Agency to coordinate the response that included:
 - Identifying the **immediate healthcare needs** of the new arrivals
 - Developing healthcare **screening protocols** that could be initiated by non clinicians with a triage pathway into clinical care
 - Facilitating **coordination with local health departments** and safety net health care systems such as Cook County Health and FQHCs, free and charitable clinics.
 - IDPH has engaged in **conversation with our federal partners** regarding improved communication between federal government personnel and receiving sites/cities. To that end, we are exploring some data-technological solutions that would help facilitate data sharing between the entities.

Setting the Stage



Public Health Response

- Reviewed and provided input on the protocols for **infection prevention** as well as intake screenings at a proposed state operated intermediate congregate housing (ICH) facility- including isolation and quarantine considerations for communicable diseases
- Worked on improving **vaccine access** for adults through local health depts through the 317 vaccine program.
- Provided **direct consultative input** on all infection prevention matters at hotels and shelters
- Provided **testing support** for communicable diseases on request from our stakeholders

Setting the Stage

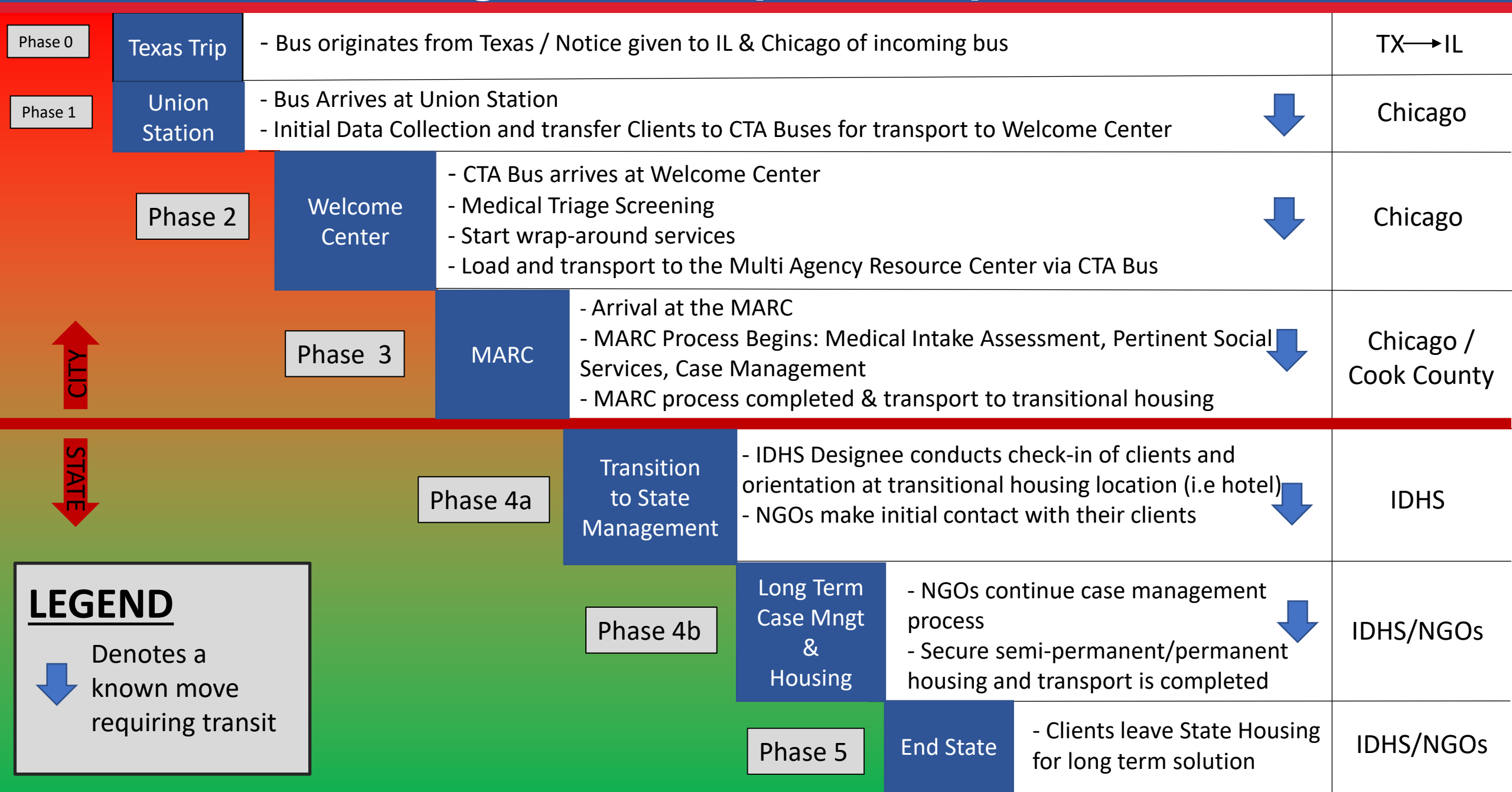


Public Health Response

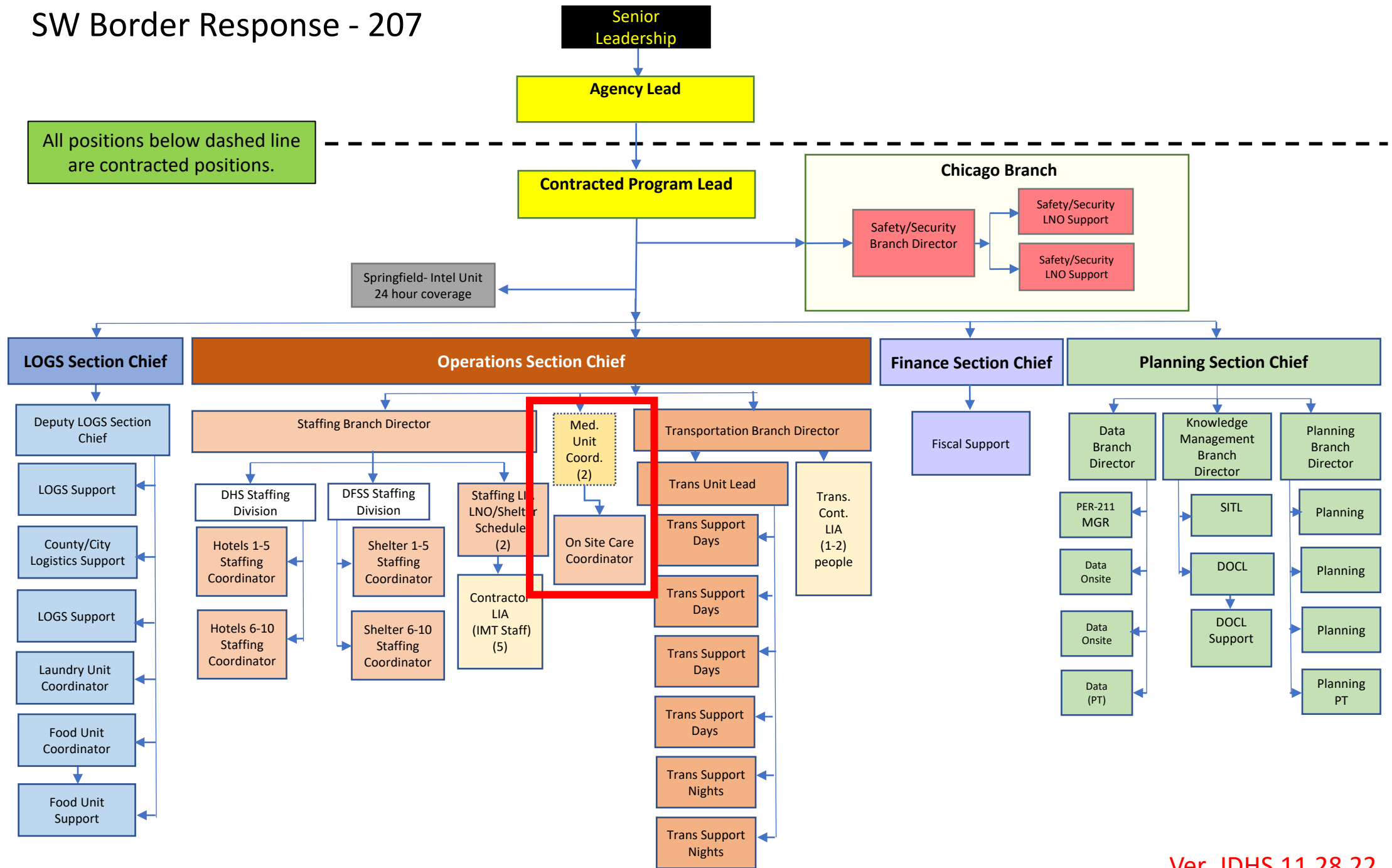
Our intent always remains:
COMPASSION AND EQUITY

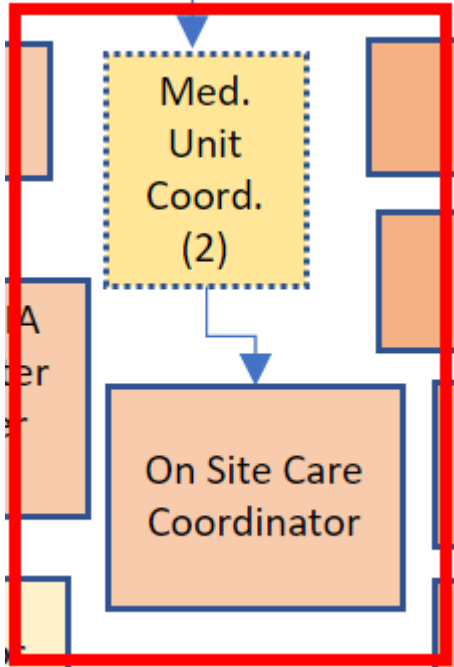
This is an all-hands-on-deck approach to make sure that these new arrivals to our state are given the care they need with the dignity they deserve while balancing the needs of our existing populations as well as the resources needed to protect the health of all residents of Illinois.

Original Concept of Response



SW Border Response - 207





- **Medical Unit Coordinator**

- Reviewed medical reporting from On-Site Coordinators
- Coordinated with Cook County Health and IDPH for information sharing for required response and support as appropriate

- **On Site Care Coordinator**

- Observe and note medical issues which the asylum seeker is presenting
- Call Cook County On-Call Provider phone line service
- On Call provider will speak with the individual, and the on-call provider will provide direction for treatment
- Take note of instructions directed by the on-call provider
- Arrange a medical appointment with Cook County Health
- Schedule transportation to the medical appointment by calling Transportation Hotline

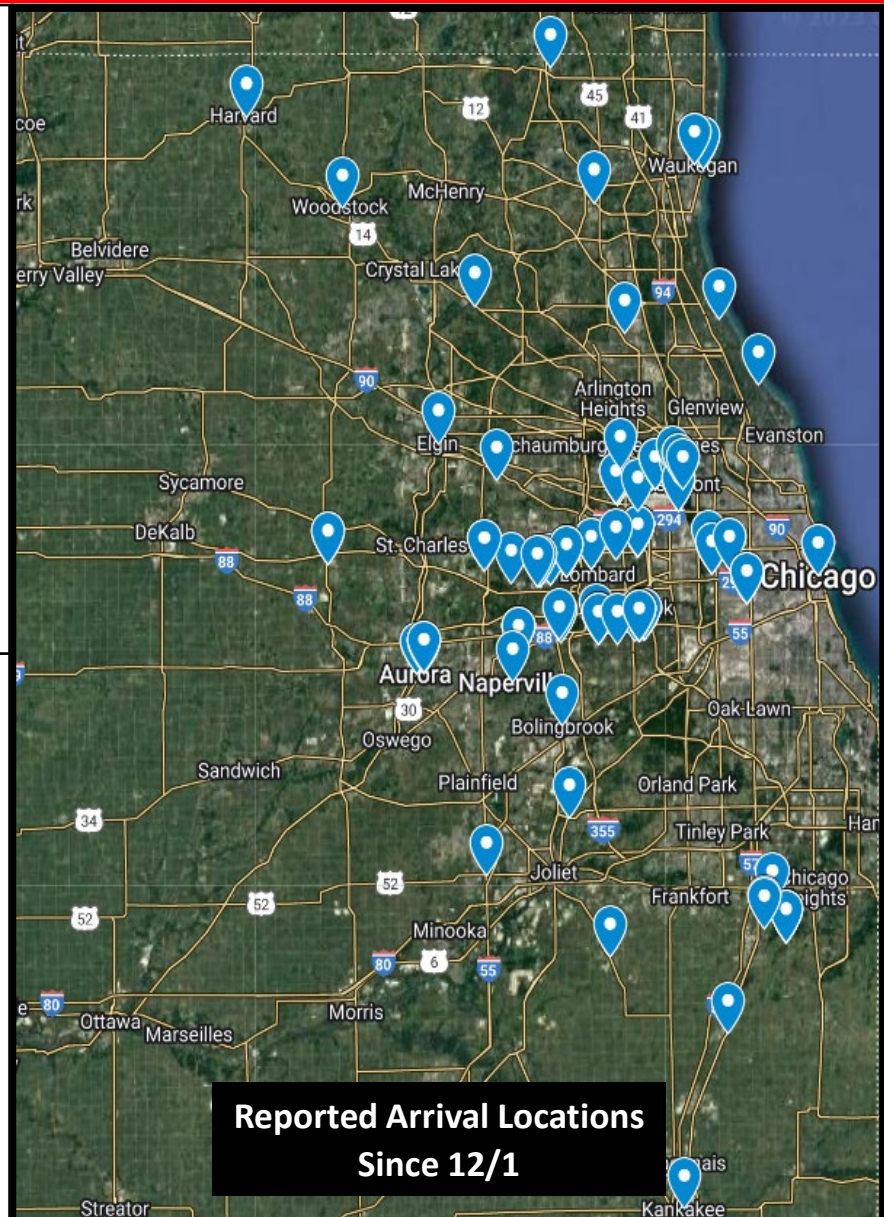
Uncoordinated Arrivals

New Bus/Plane Arrivals Outside City of Chicago

Reported bus/plane arrivals outside Chicago since 12/1/23: **178**
 Number of buses in last 24 hrs.: **7**
 Number of buses in last 7 days: **48**

Approximate Number of Passengers Arrived Outside City of Chicago

Approximate number of passengers arrived outside Chicago since 12/1/23: **7,314**
 Number of passengers in last 24 hrs.: **313**
 Number of persons arrived on buses in last 7 days: **1,920**



Reported Arrival Locations Since 12/1

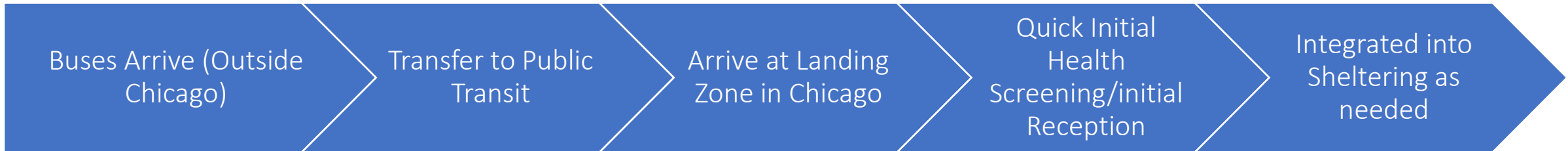
BUS DROPS REPORTED TO IEMA-OHS IN THE LAST 72 HOURS:

Date	Location	# of PAX
1/1	Hinsdale (DuPage County)	30 Passengers
1/2	Wheaton (DuPage County)	20-25 Passengers
1/3	Wheaton (DuPage County)	48 Passengers
1/3	Glen Ellyn (DuPage County)	49 Passengers
1/3	Wheaton (DuPage County)	46 Passengers
1/3	Wheaton (DuPage County)	46 Passengers
1/3	Lombard (DuPage County)	46 Passengers
1/3	Wheaton (DuPage County)	38 Passengers
1/3	Chicago (Cook County)	Unknown

CAO 04 JAN 2023



Current Reception Process





Lessons Learned/Future Considerations



- Information sharing – Bus Companies
- The **criticality of operational coordination and communication** laterally and vertically between Stakeholders is crucial.
- The criticality of **coordination and communication with volunteers** and healthcare partners.
- Non-traditional event type and **lack of alignment with traditional emergency response frameworks**, e.g., American Red Cross typically has a role in mass care, but this event did not meet their criteria.
- The “new normal” in which emergency management has been tapped to lead **non-traditional responses**.
- Emphasis on **resettlement efforts** and reaching a "stabilization point.”



ILLINOIS DEPARTMENT OF PUBLIC HEALTH
IDPH
PROTECTING HEALTH

Questions