



ASSOCIATION OF IMMUNIZATION MANAGERS



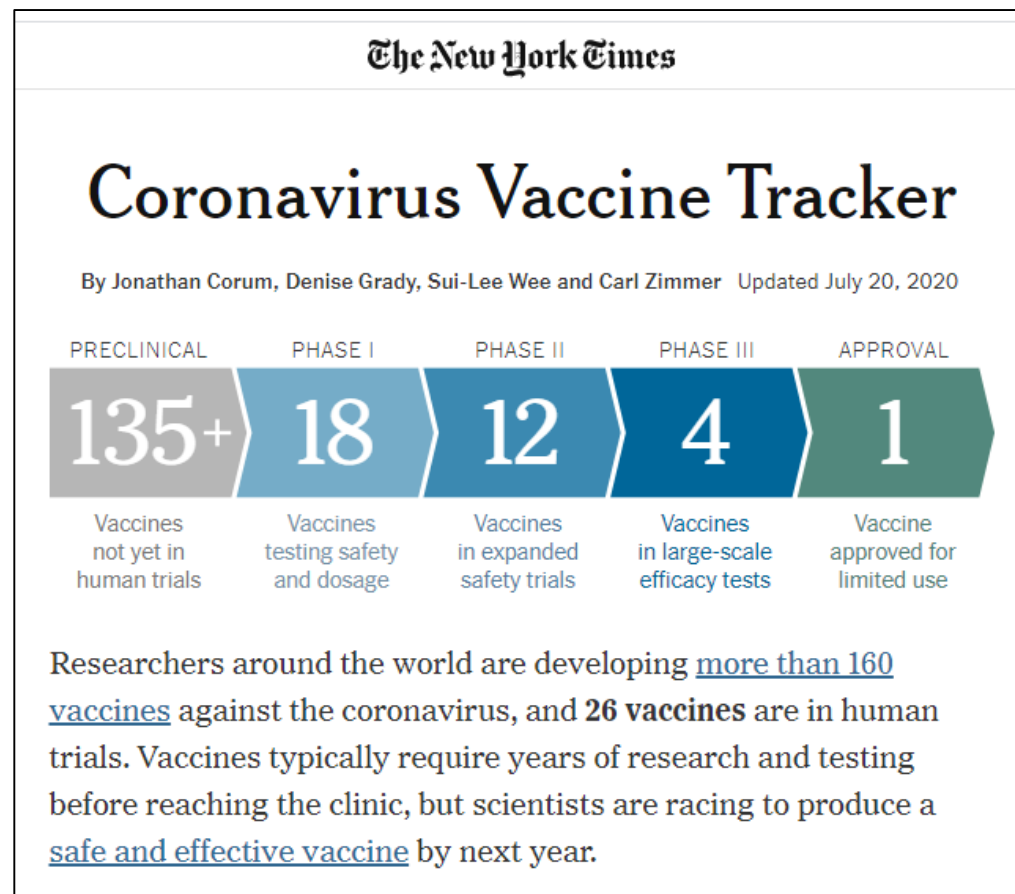
NEMA ASTHO GHSAC Joint Policy Work Group

Claire Hannan, Executive Director
Association of Immunization Managers (AIM)

Overview

- COVID-19 Vaccine Development
- COVID-19 Vaccine Distribution Planning
- Resources

Tracking COVID-19 Vaccine Development



Vaccine Development: Unknowns

- Timing/supply availability?
- Dosing indication – 2 doses?
- Storage/shipping requirements – extreme cold?
- Packaging – multi-dose vials? Syringes?
- Adjuvant?
- Age indication preference?

Vaccine Distribution: Planning Assumptions

- Limited doses may be available as early as Fall 2020
- Critical workforce, health care personnel, high-risk will be prioritized
- Multiple presentations with different protocols

Source: April 22 CDC memo to IZ awardees

Vaccine Distribution: Unknowns

- Existing CDC allocation/ordering/distribution system OR Operation Warp Speed/DOD?
- Specific Prioritization recommendations?
- Financing? Funding for public health?
- Requirements for provider enrollment?
- Requirements for data collection and reporting?

Current State/Territory Planning Activities

Identifying providers, enrolling in IIS

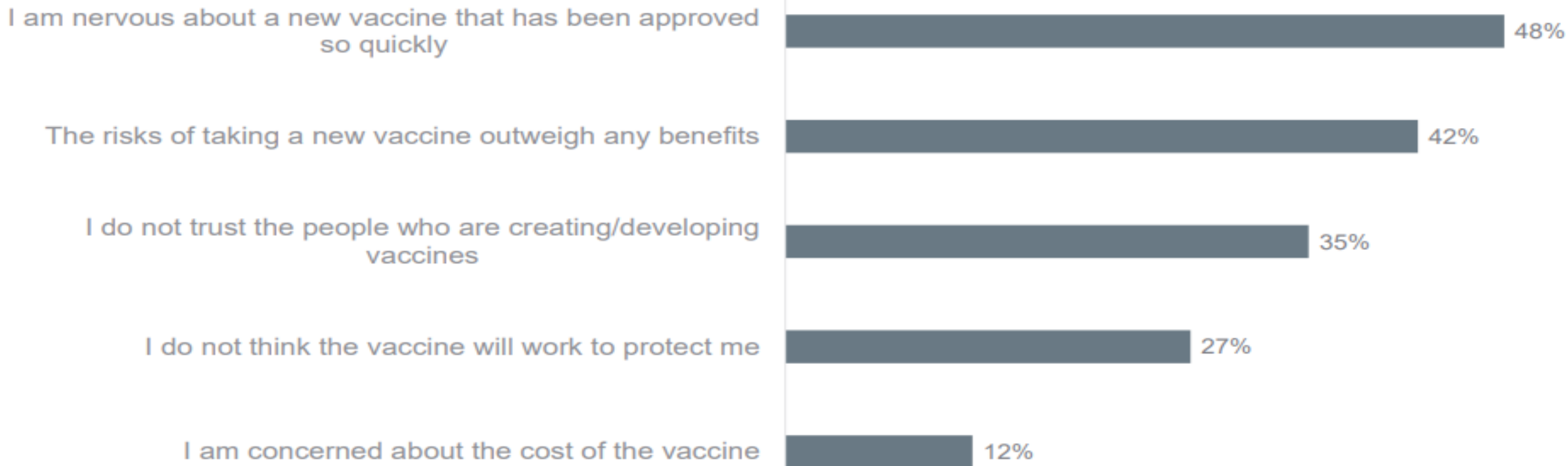
Estimating priority populations

Determining allocation process

Establishing data expectations

Ensuring IT readiness (IZ Gateway)

Why are people not interested in the vaccine?



Reuters/Ipsos, Base= 1,048 U.S. adults who indicated they would not get a COVID-19 vaccine

Existing System for Pandemic Vaccine Distribution

National Center for Immunization and Respiratory Diseases

Pandemic Vaccine Program Distribution, Tracking, and Monitoring



During a pandemic, CDC will scale up existing vaccine distribution, tracking, and monitoring systems to support the response.



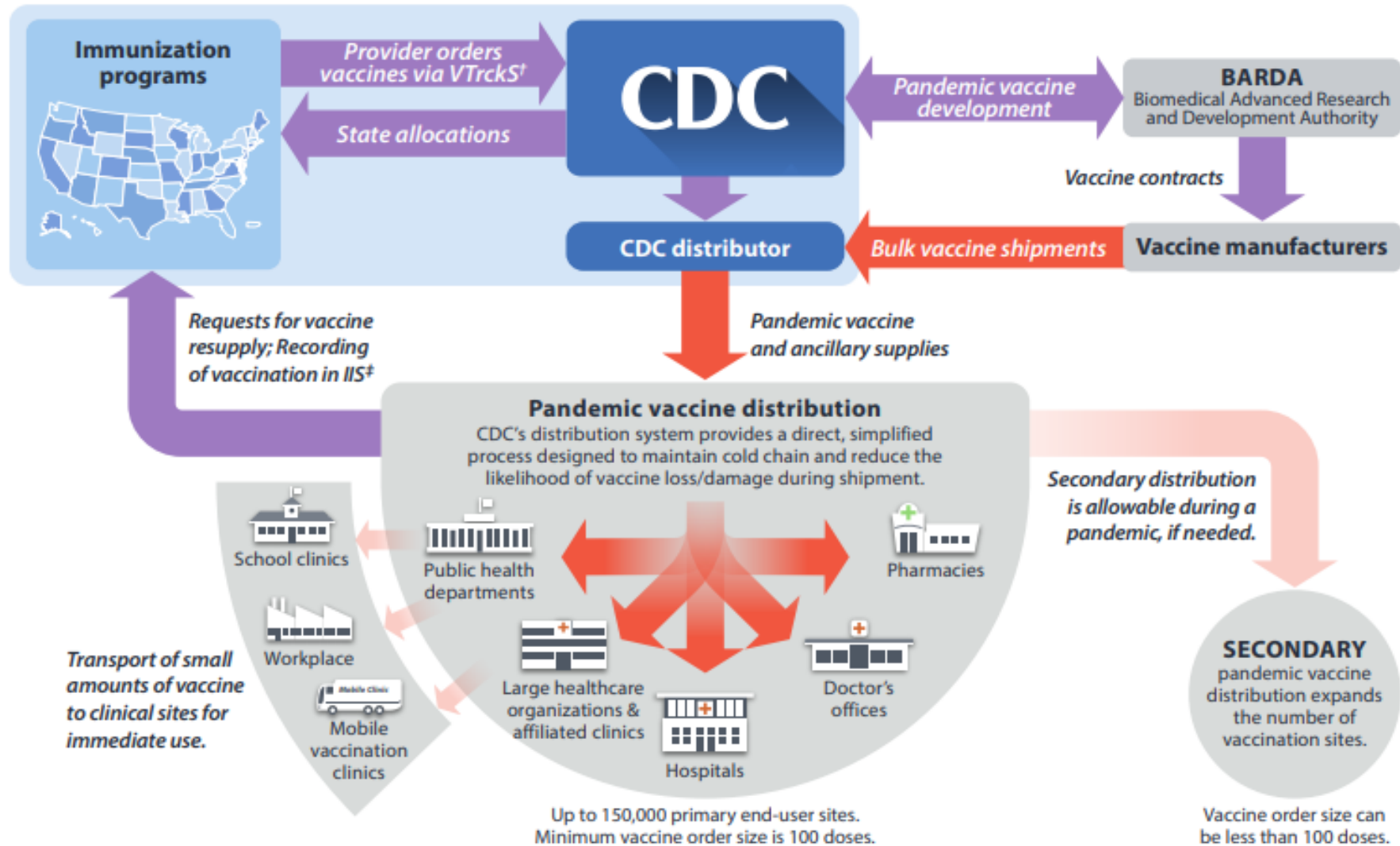
Vaccine handling, distribution, and tracking

Secure storage and safe and efficient distribution of vaccine are the cornerstones of a successful vaccination program. CDC's vaccine distribution system, which transfers products to sites where they will be securely stored for later use, is flexible, scalable, and tested. This system ensures maintenance of cold chain*, which is essential to vaccine effectiveness. Each year, CDC distributes over 75 million doses of vaccines from every vaccine manufacturer to health departments and

private health providers across the country. From these sites, vaccine may be transported in small quantities to clinical sites for immediate use, while maintaining cold chain. During an emergency, this proven system can be scaled up and expedited to manage and distribute almost 900 million doses of vaccine. It is the only existing vaccine distribution system with the capacity and flexibility to reach the entire nation to support the needs of a pandemic.

Distribution of pandemic vaccine and supplies

Distribution of pandemic vaccine and supplies



* <https://www.cdc.gov/vaccines/hcp/admin/storage/index.html>

† The Vaccine Tracking System (VTrcks) is CDC's management and ordering systems for publicly-funded vaccines.

‡ Immunization Information System (IIS)

www.cdc.gov/flu/pandemic-resources/

Interim pandemic distribution plan, 04/20/20

Key COVID Vaccine Planning Resources



- [AIM's COVID-19 Vaccination Preparation Tips for Immunization Program Managers](#)
- [AIM / ASTHO / NACCHO / AIRA Recommendations to OWS Leaders](#)
- [ASTHO – AIM Immunization Campaign Policy Principles](#)
- [HHS Operation Warp Speed Fact Sheet](#)
- [ASTHO Report Assessing Policy Barriers To Effective Public Health Response In The H1N1 Influenza Pandemic](#)
- [GAO Report INFLUENZA PANDEMIC Lessons from the H1N1 Pandemic Should Be Incorporated into Future Planning](#)
- [CDC Pandemic Vaccine Program Distribution, Tracking, and Monitoring](#)
- [CDC Interim Updated Planning Guidance on Allocating and Targeting Pandemic Influenza Vaccine during an Influenza Pandemic](#)
- [CDC Pandemic Influenza Vaccine Targeting Checklist](#)
- [CDC Roadmap to Implementing Pandemic Influenza Vaccination of Critical Workforce](#)
- [CDC Checklist of Best Practices for Vaccination Clinics Held at Temporary, or Off-site, Satellite Clinics](#)
- [CDC Guideline for Large-Scale Influenza Vaccination Clinic Planning](#)



THANK YOU

Claire Hannan, Executive Director
Association of Immunization Managers (AIM)
channan@immunizationmanagers.org
www.immunizationmanagers.org