



## **SUMMARY**

Louisville, Kentucky

July 31, 2019

On July 31, 2019, the National Homeland Security Consortium (NHSC) met at the Omni Louisville Hotel in Louisville, Kentucky.

### **Welcome**

Tri-Chair Jared Maples (GHSAC) provided brief opening comments and facilitated introductions of the participants. Tri-Chair Joe Logan (AGAUS) was unable to attend due to official duties and Caleb Cage (NEMA) recently left emergency management, so NEMA will be appointing a new Tri-Chair for his position in October.

### **Resilience Through Insurance and Mitigation**

*John Allen, Director, Office of Preparedness Integration, FEMA*

Allen explained the continued efforts by FEMA to improve on uninsured losses in disasters. FEMA's moonshot to close the insurance gap and prevent billions in uninsured damage. He encouraged members to provide narratives on the return on investment from mitigation as this helps explain the utility of programs to those outside emergency management. One example he highlighted was mitigation measures that allowed a hospital to stay open during a disaster.

### **Shaken Fury – Lessons Learned**

*Michael Dossett, Director, Kentucky Emergency Management*

From May 29 through June 7, a series of tabletop, functional, and full-scale exercises occurred through a partnership between FEMA, the U.S. Department of Energy, U.S. Northern Command, state and local governments, and the private sector. The exercise utilized a 7.7 magnitude earthquake scenario along the southwest segment of the New Madrid Seismic Zone (NMSZ) near Memphis, Tennessee to incorporate response and recovery missions. The purpose was to evaluate and improve the whole community's response to a "no-notice" earthquake, identify gaps in resources, and implement a coordinated recovery strategy that prioritizes resources required for the response.

Kentucky was one of the participating states, so Dossett provided an overview of their participation and some tips for managing such a potentially massive event. He highlighted three main areas of focus for the Consortium:

- Information access is necessary in providing heightened situational awareness and better responses;
- An information sharing platform is mandatory. Kentucky used the Regional Information Sharing Platform (RISP), which can include automated scripts for messaging and a power outage dashboard, and;
- IT teams must stand ready to provide coding assistance and be prepared for unanticipated needs.



## SUMMARY

Louisville, Kentucky

July 31, 2019

Overall, Dossett praised the conduct of the exercise, thought the effort was worthwhile, and encouraged those from all sectors to participate in future iterations.

### **Realigning to Enhance Risk Management: The CISA Reorg. and New Risk Management Center**

***Bob Kolasky, Director, National Risk Management Center, CISA***

Kolasky started by outlining how the NRMC seeks to be the nation's risk advisor, showing what the risks are and what can be done to mitigate them. The NRMC is built on a regional model – designed to bolster capacity along FEMA Region lines. He encouraged members to assess convergences in states between cyber and physical critical infrastructure. When considering critical infrastructure, it is necessary to move beyond what the infrastructure does to assess what it is responsible for and what cascading impacts its disruption could have. The NRMC is building out a national risk architecture to assess interdependencies and can conduct cyber and physical risk assessments. Upcoming initiatives for the NRMC focus on high priority risks such as:

- Election security and State/Local/Tribal/Territorial support;
- Pipeline security, and;
- Rolling out 5G.

The CISA reorganization moved the old National Protection and Programs Directorate (NPPD) of DHS into the Cybersecurity Division, Infrastructure Security Division, and Emergency Communications Division. Specific to emerging regional activities, the Integrated Operation Division is designed to manage the regional structure. The overall hope is this reorganization will break-down silos within the agency and allow them to operate regionally like other DHS components.

CISA is responsible for protecting the country's critical infrastructure from physical and cyber-threats, overseeing a host of cybersecurity-related activities. This includes operating the National Cybersecurity and Communications Integration Center (NCCIC), which provides round-the-clock situational awareness, analysis, incident response and cyber defense capabilities to the federal government, state, local, tribal and territorial governments, the private sector and international partners.

### **A National Vision for Resilience**

***Mark Harvey, Senior Director for Resilience Policy, National Security Council***

According to Harvey, the preeminent threat is the asymmetric threat to infrastructure. When disasters strike, it is critical to understand how all capabilities at all levels of government can come together, but the NSC sees diversity of grant programs as a challenge for stakeholders to maximize support. He said the nation must incentivize pre-disaster analysis to help shorten the assessment cycle and address risk before disruption.



## SUMMARY

Louisville, Kentucky

July 31, 2019

During recent disasters, he sees the following lessons learned for states:

- Involve auditors ahead of a disaster to limit the risk of having funds pulled back 3-5 years post-disaster.
- Discuss potential project-scoping before a disaster to shorten the amount of time required to work with FEMA on scoping projects.
- Improve strategic communications around building codes to highlight how building codes can limit damage and prevent loss of life during a disaster to encourage stricter codes and better adherence.

Harvey wrapped-up by outlining how new types of disasters require new partners. As inter-disciplinary stakeholders integrate into the disaster response ecosystem, it can be challenging to gauge capacity and stress levels.

### **Cross-Discipline Risk Analysis**

*Thom Kirk, Representative, National Fusion Center Association*

In addition to representing the National Fusion Center Association, Kirk is the Deputy Secretary of the West Virginia Department of Military Affairs and Public Safety. Kirk outlined how increased stakeholder presence in the West Virginia fusion center has led to significant successes, including additional explosives investigations headed by the fire marshals and prediction of gangs' attempted territory expansion from information compiled by analysts working with the Department of Corrections. West Virginia collects information on opioids, including medical examiner overdose data and emergency responder data, and then analyzes and disseminates information. The fusion center is also working closely with gas pipeline and other utilities, cybersecurity, and improving threat assessments.

### **Business Session**

Maples solicited topics for upcoming meetings. The two priorities were the ongoing rework of the BioWatch system; and how digital and social media fits with planning efforts of state and local governments' part of the national security environment.

### **Off-Site Security Briefing and Churchill Downs Tour**

After the conference room portion of the agenda, Consortium members took transportation to Churchill Downs for a tour of the facility and security briefing on local events. The following speakers provided expert insight into events such as Thunder Over Louisville, the Kentucky Derby, and various other events often attracting hundreds of thousands of participants. Presenters included:

- Matt Gibson, Sr. Vice President of Events, Kentucky Derby Festival
- Jill Hume, Lieutenant, Louisville Metro Police Department
- Jody Meiman, Executive Director, Metro Emergency Mgt Agency
- Aaron Graves, Special Agent, Federal Bureau of Investigation

A large digital display shows a dashboard titled "Shaken Fury '19 - KYEM RISP Dashboard". The dashboard includes a "CUSEC Private Sector Status Dashboard" with a prominent red triangle icon and the number "4,380" indicating the total number of closed businesses. A map on the right shows red markers on a geographic area. Below the map, there is a list of closed businesses with details like "Closed - CVS Vevay,IN - Source=SABER".

Shaken Fury 2019

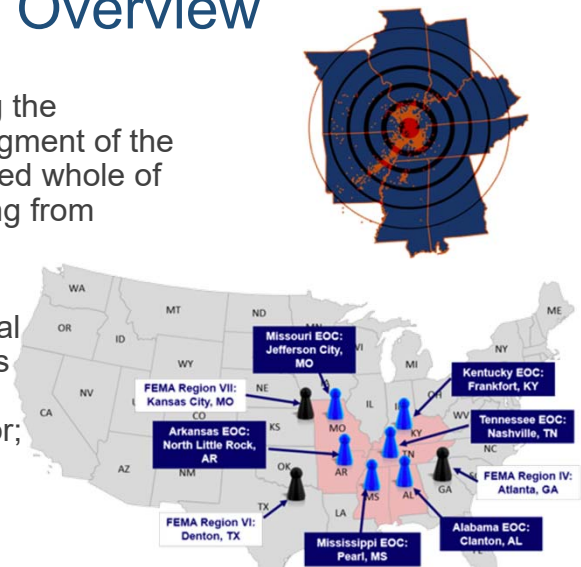
Enhanced Regional Information Sharing through State, CUSEC, DHS, S&T and FEMA partnerships

The bottom of the image features four logos: "SHAKEN FURY 2019 Response and Recovery Exercise" with a red and blue graphic; the DHS Seal; the "Homeland Security Science and Technology" logo; and the FEMA logo.

## Shaken Fury Exercise Overview

**Scenario:** 7.7 magnitude earthquake along the Cottonwood Grove Fault, the southwest segment of the NMSZ, near Memphis, Tennessee. Exercised whole of community response and recovery occurring from rupture to +61d post rupture.

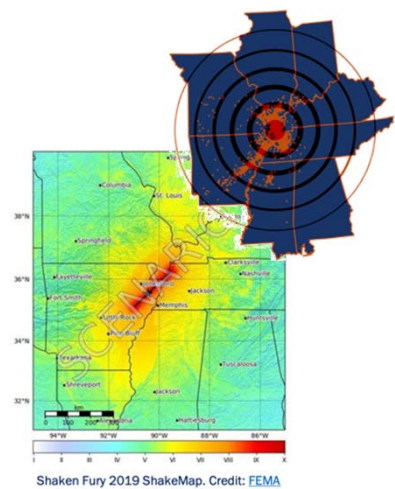
**Participants:** CUSEC State EMAs and local municipalities; Federal Dept's and Agencies (FEMA Regions/HQ, DOE, USGS); DoD (State NG, NGB, NorthCom); Private Sector; NGOs, Critical Infrastructure and Utilities.



## Shaken Fury Exercise Overview

**Interagency Objectives** (*first 4 for state/regional focus*):

1. Establish **enhanced information sharing practices** across the whole community to improve preparedness, response, recovery, and mitigation in response to a catastrophic incident
2. Demonstrate the ability of state and federal response and recovery efforts to collaborate with the **whole community to adjudicate and allocate critical resources** to affected communities
3. Demonstrate integrated, **real-time field reporting** capabilities, and incorporate field reports at appropriate scales in EOCs
4. Validate **mutual aid resource planning** and **tracking** capabilities to improve coordination among whole community partners







# OUTCOMES

## Whole of Community Information Sharing

### CUSEC RISP - Shaken Fury Hub

Shaken Fury Hub Site provided access to information including: *regional power outages, gas station fuel availability, and business open-close status.*

Information sharing was enhanced among the whole of community: *states, FEMA Regions, FEMA HQ, National Guard Bureau, private sector, and nonprofit/ crowdsource groups.*

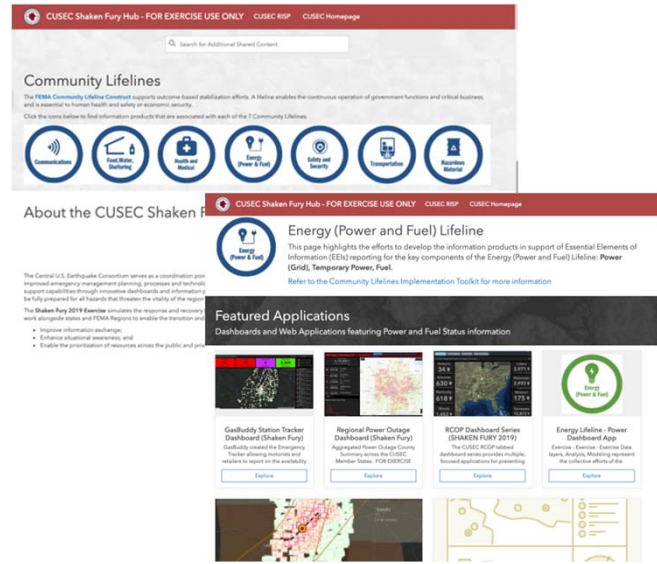


<http://shakenfury.cusec.org>

<http://risp.cusec.org>

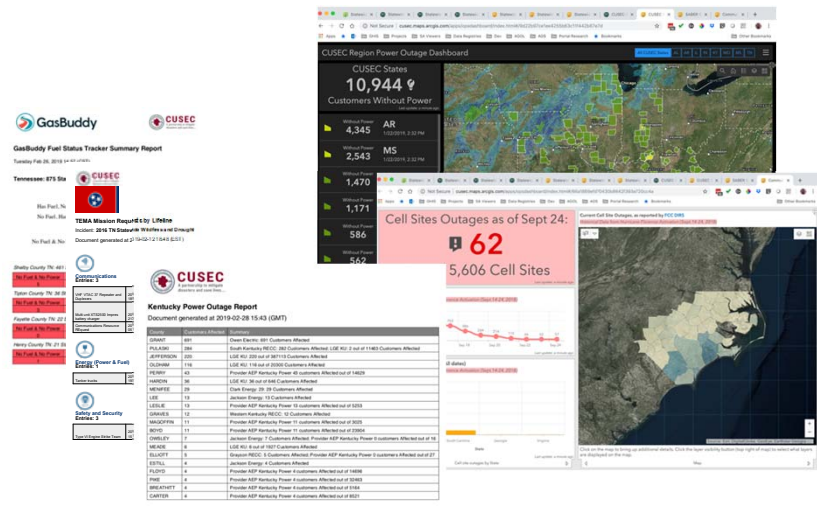
## Outcomes – Whole of Community Information Sharing

This level of information access heightened situational awareness and the ability to make informed decisions aligned to the seven [FEMA Community Lifelines](#)



## RISP Information Products

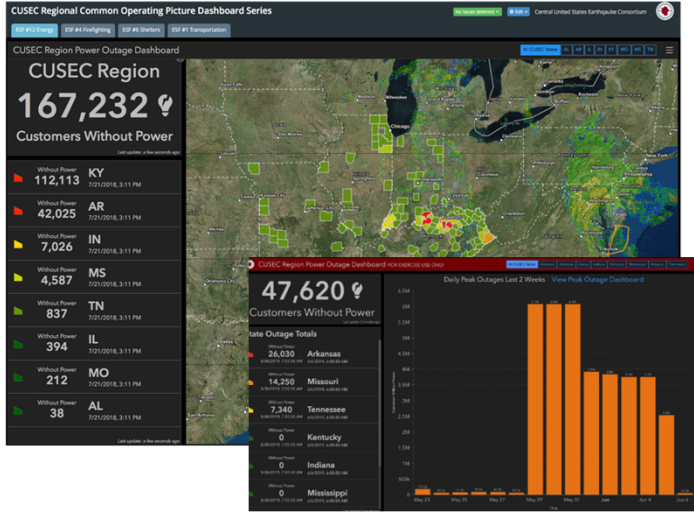
- Examples:
  - Power outages
  - FCC DIRS
  - SABER
  - Esri HERE
  - GasBuddy



Summary Reports

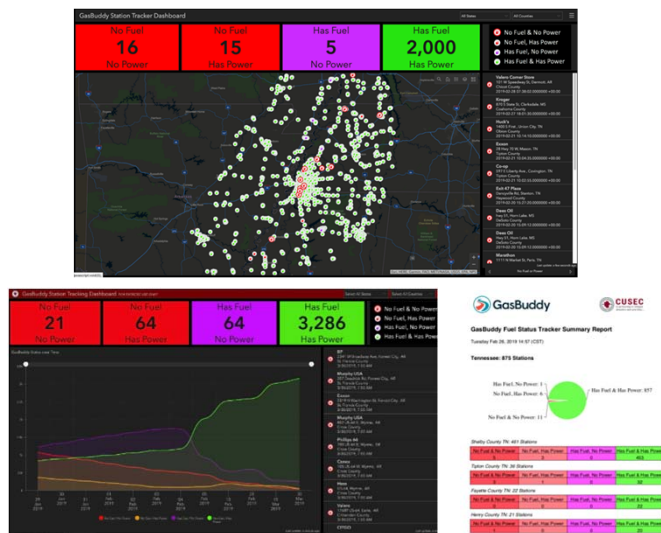
Operations Dashboards

# Energy / Power Outages



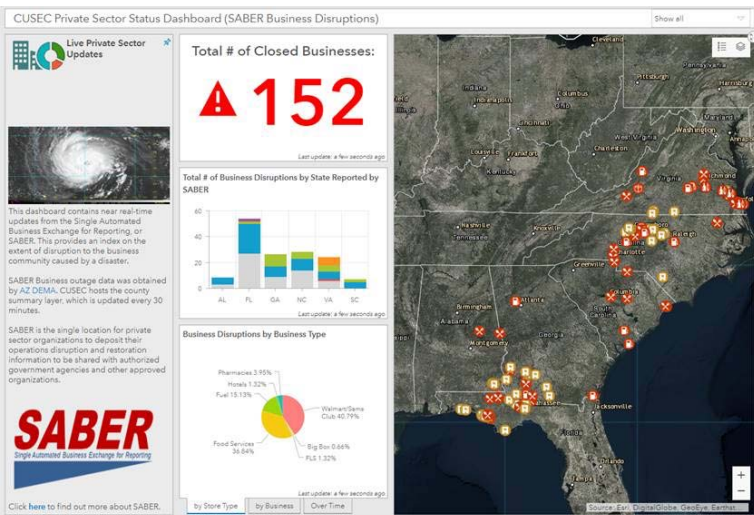
- The CUSEC Power outage dashboard provided participants with simulated power outage data throughout the exercise, ranging from rupture to 90 days after the event.
- This dashboard was the most visited of the CUSEC information products during the exercise, reflective of the critical importance of power status data.
- Graphical summaries of power outages over time provided a way to assess trends in power restoration by state or regionally

# Fuel / GasBuddy Emergency Tracker Dashboard



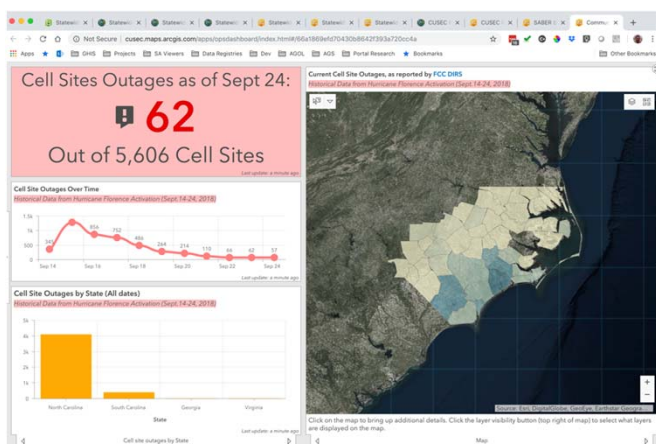
- The GasBuddy Dashboard informed emergency managers on regional and state gas station fuel and power status, and the trends in status over time
- Provides emergency managers with evidence base to inform timely decisions regarding resource allocations, such as generator placement to restore power to a station with fuel but no power.
- Trends in fuel availability provide an indicator on the overall stability of the retail fuel market.
- Static state-by-state reports of fuel availability were available in a PDF format

## Private Sector Status (SABER)



- This Dashboard identifies business disruption data from [SABER \(Single Automated Business Exchange for Reporting\)](#) in the CUSEC region, while also aggregating data at the county level for a regional picture of business disruption.
- Provides insight on the open/close status of businesses, as well as reasons for closure (associated with Lifelines).
- Used by states and FEMA NBOEC to gauge the health of the business community.

## Communication Status (FCC DIRS) Dashboard



- Data is provided by the FCC Disaster Information Reporting System (DIRS) during large disasters.
- DIRS provides information on communications infrastructure, including:
  - Status of PSAP sites;
  - Status of Wireless Services / cell sites, including the total number and percentage of cellular sites out of service by county and/or state;
  - Estimate number of Cable Systems and Wireline subscribers out of service;
  - Total number of Broadcast TV and Radio stations out of service, including station call signs.
- Was not tested during Shaken Fury due to a lack of simulated communications data, the dashboard was used during the 2018 hurricane season

# Automated EEI Status Reports

**CUSEC**  
TEMA Mission Requests by Lifeline  
Incident: 2016 TN Statewide Wildfires and Drought  
Document generated at 2019-02-12 18:48 (EST)

**Communications**  
Entries: 3

|                                   |                     |           |   |
|-----------------------------------|---------------------|-----------|---|
| MNF VAC 27 Responder and Dispatch | 2016-11-08 18:02:04 | Statewide | Request from Crowley RGA (Task Overlay) to base on standby and ready to receive an request - VAC VAC 27 Responder and Dispatch for CUMMINS Crisis Data Site |
| MNF VAC 27 Responder and Dispatch | 2016-11-03 17:43:07 | Statewide | Request for assistance in providing a copy of the report for the CUMMINS Crisis Data Site for the CUMMINS Crisis Data Site                                  |
| Communications Resource Request   | 2016-12-01 16:16:07 | Statewide | To Dept. of Energy requested use of handheld radio battery for VAC2000 radio.   |

**Energy (Power & Fuel)**  
Entries: 1

|           |                     |           |   |
|-----------|---------------------|-----------|---|
| Taskforce | 2016-12-01 18:02:07 | Statewide | Request for 10 additional trailer trucks to support WRECC Crisis Data |
|-----------|---------------------|-----------|---|

**Safety and Security**  
Entries: 3

|                            |                     |           |  |
|----------------------------|---------------------|-----------|--|
| Type VI Degrade State Team | 2016-11-02 15:53:03 | Statewide | ESF 4 - On Standby for deployment to State. Teams: 885-654-8545 for the FL 1887 requesting Copier Type VI 885-654-8545 to be approved for the WRECC Operations |
|----------------------------|---------------------|-----------|--|

Reports from CUSEC States

**GasBuddy**  
GasBuddy Fuel Status Tracker Summary Report  
Thursday, Feb 28, 2019 09:08 (CST)

**Mississippi: 520 Stations**

- No Fuel, No Power: 1
- No Fuel, Has Power: 9
- No Fuel & Has Power: 507

**Dallas County: 800 BP Stations**

- No Fuel: 1
- No Fuel & No Power: 1
- Has Fuel & No Power: 798

**CUSEC**  
Kentucky Power Outage Report  
Document generated at 2019-02-28 15:43 (GMT)

| County    | Customers Affected | Summary  |
|-----------|--------------------|--|
| GRANT     | 891                | Over Electric 891 Customers Affected   |
| PULASKI   | 284                | South Kentucky RECC: 284 Customers Affected. USE ADJ: 2 out of 11463 Customers Affected                  |
| JEFFERSON | 250                | USE ADJ: 250 out of 261113 Customers Affected  |
| OLDHAM    | 116                | USE ADJ: 116 out of 20200 Customers Affected   |
| FREWY     | 43                 | Provider AEP Kentucky Power: 43 customers Affected out of 14629  |
| HARDEN    | 36                 | USE ADJ: 36 out of 546 Customers Affected  |
| MENEFEE   | 29                 | Clark Energy: 29 Customers Affected  |
| LEE       | 13                 | Jackson Energy: 13 Customers Affected  |
| LESLIE    | 13                 | Provider AEP Kentucky Power: 13 customers Affected out of 5253   |
| WARREN    | 12                 | Western Kentucky RECC: 12 Customers Affected   |
| MAUGHRIN  | 11                 | Provider AEP Kentucky Power: 11 customers Affected out of 3025   |
| BOYD      | 11                 | Provider AEP Kentucky Power: 11 customers Affected out of 23944  |
| OWSLEY    | 7                  | Jackson Energy: 7 Customers Affected. Provider AEP Kentucky Power: 3 customers Affected out of 18        |
| MEADE     | 6                  | USE ADJ: 6 out of 1927 Customers Affected  |
| ELLIOTT   | 5                  | Western Kentucky RECC: 5 Customers Affected. Provider AEP Kentucky Power: 3 customers Affected out of 22 |
| ESTILL    | 4                  | Jackson Energy: 4 Customers Affected   |
| FLOYD     | 4                  | Provider AEP Kentucky Power: 4 customers Affected out of 1486  |
| POW       | 4                  | Provider AEP Kentucky Power: 4 customers Affected out of 23462   |
| BREATHITT | 4                  | Provider AEP Kentucky Power: 4 customers Affected out of 1164  |
| CANTON    | 4                  | Provider AEP Kentucky Power: 4 customers Affected out of 8551  |

Reports from 3rd Parties

- These reports are a CUSEC RISP-based service based on shared data.
- Building automated summary reports to support Lifeline reporting processes
- Can engage with states to support building state-specific reports

# Aligning State Resource/Mission Requests to Lifelines

**Shaken Fury '19 - KYEM RISP Dashboard**

**KYEM Resource Request Dashboard**

Total Requests: **184**

**KYEM Community Lifelines**

**Root Cause Analysis**

Status: **Wait?**

Active: **New Wait?**

Are any Lifelines Active?

**Grey: No report, status unknown**

**Green: Operable, No Issues**

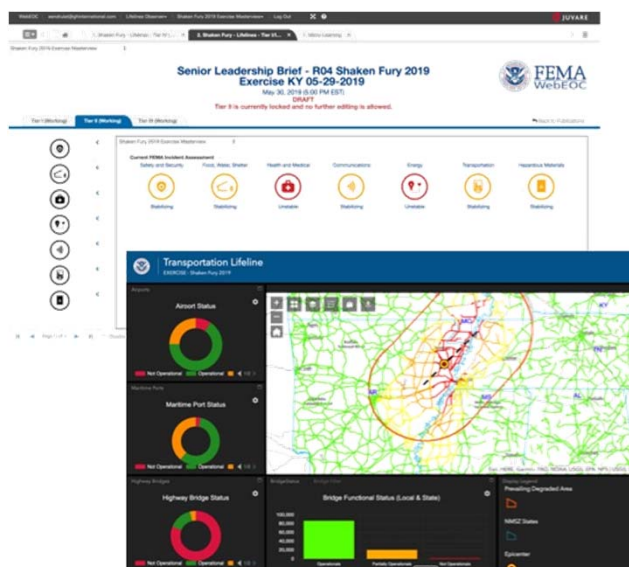
**Yellow: Partially Operable, Limited Capability, Damaged But Usable**

**Red: Inoperable, No Capability, Broken, Destroyed**

- To support integration of Lifelines in state processes, **Kentucky Emergency Management Agency (KYEM)** aligned their ESF's to Lifeline components.
- S&T support staff worked with KYEM to align their Resource Request Dashboard to Lifelines, and incorporate this information into an Operations Dashboard format. This enabled KYEM to bucket resource requests by Lifeline.
- KYEM prepared a Lifeline-based dashboard, incorporating a blend of information obtained from within KY as well as regional/national information from the CUSEC RISP.

## FEMA Community Lifeline WebEOC Boards & Information Products

- During Shaken Fury, **FEMA exercised the use of their Lifeline WebEOC Boards** (Tier I, II, IV) as well as the Lifeline-based Information products (Tier III).
- The exercise demonstrated how the states, FEMA Regions, and FEMA Incident Management Assistance Teams (IMATs) could report Lifeline status updates (i.e., *What?, So What? Now What? and any Limiting Factors*) based on the Community Lifeline construct.



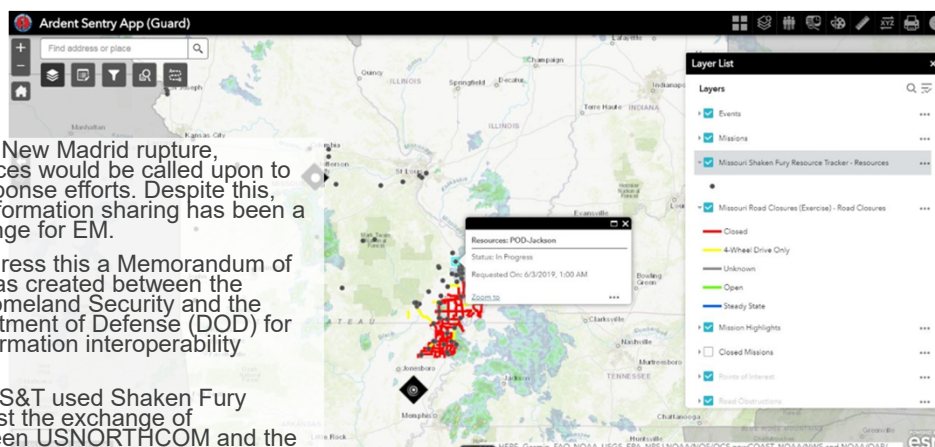
## Demonstration of Field Reporting Capabilities CUSEC's Building Safety Assessment Application

- **CUSEC Building Safety Assessment program** represents the most mature implementation of S&T-supported technology demonstrated during Shaken Fury.
- During the exercise, the **Tennessee Structural Assessment and Visual Evaluation (TNSAVE)** coalition tested their activation and field collection processes.

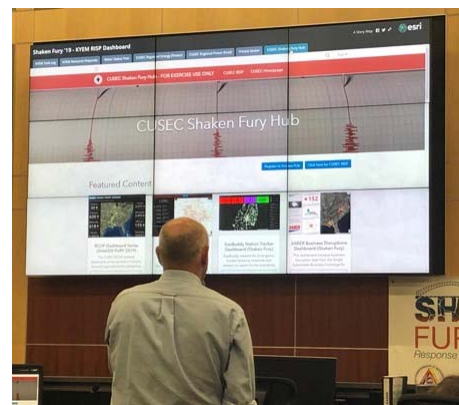


## DoD – Civilian Information Sharing

- In an event like a New Madrid rupture, DoD/NGB resources would be called upon to support state response efforts. Despite this, civilian-military information sharing has been a consistent challenge for EM.
- In an effort to address this a Memorandum of Understanding was created between the Department of Homeland Security and the Joint Staff, Department of Defense (DOD) for Collaborative information interoperability Efforts.
- Under this MOU, S&T used Shaken Fury to successfully test the exchange of information between USNORTHCOM and the National Guard Bureau (NGB) systems (JIEE 2.0) and the CUSEC RISP.



Access the Shaken Fury 2019 StoryMap here: <https://arcg.is/01Kfvm>



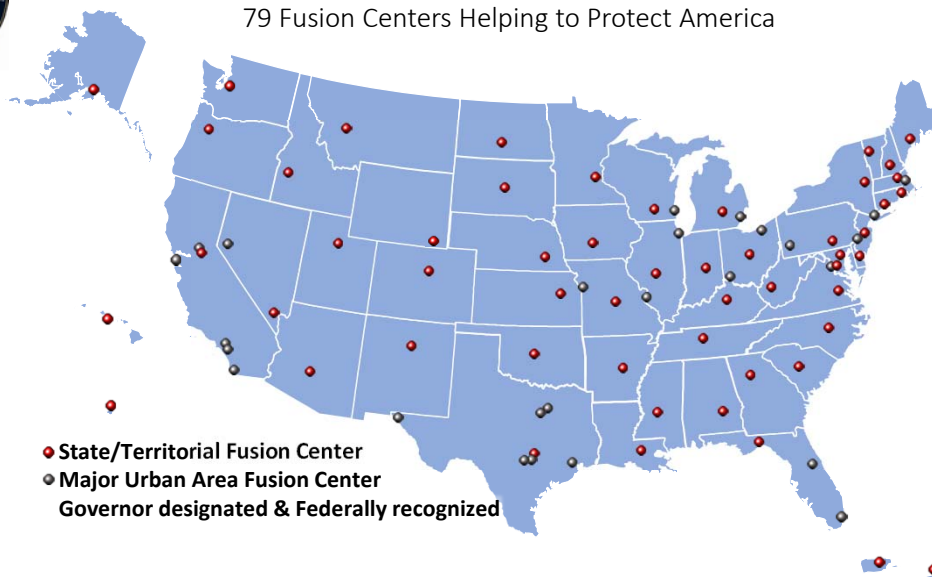


## Cross-Discipline Risk Analysis



## The National Network of Fusion Centers (NNFCs)

79 Fusion Centers Helping to Protect America



Unclassified/For Official Use Only



## 24/7/365 Operation

### WVI/FC Staff

Director  
Deputy Director  
Supervisory Analyst  
4 Intelligence Analysts  
Administrative Assistant



(Unclassified//For Official Use Only)













## Assessments and Analysis by State and Federal Gov

- WV Intelligence Fusion Center
- WV Emergency Management
- WV National Guard
- WV DHHR
- WV State Police
- WV DNR
- WV DEP
- Governors Office
- WV State Fire Marshal
- WV DOH
- Raleigh County EMS
- Fayette County EMS
- Department of State
- Department of Defense
- DHS
- FBI
- National Park Service
- ICE
- FEMA
- FAA
- TSA
- EPA
- National Weather Service
- Secret Service

## Other Cross-Discipline Analysis Projects

### Gas Pipeline and other Utilities



## Cyber Security

- Protect state system
- Protect election system
- Case support
  - Bomb threats
  - Ransomware attacks
  - Threats of violence via social media



(Unclassified//For Official Use Only)

## Threat Assessments

- Special Events
- Government Facilities
- Private Sector Facilities



(Unclassified//For Official Use Only)

# Thank You Questions?

Thom Kirk  
Deputy Secretary/Chief General Counsel  
West Virginia Department of Military Affairs and Public Safety  
[Thomas.I.kirk@wv.gov](mailto:Thomas.I.kirk@wv.gov)