

LOUISIANA ELECTED OFFICIALS EMERGENCY MANAGEMENT MANUAL

PREPARE + PREVENT + RESPOND + RECOVER + MITIGATE





Introductions



Summit Material

Today all **participants will leave** with the following...

Elected Officials
Manual

Recovery Tool
Packet



Agenda

- Overview
- Prepare
- Prevent
- Respond
- Recover
- Resources + Tools
- Closing Comments





Overview



Overview



Summary of *Louisiana Homeland Security & Emergency Assistance & Disaster Act* (RS: 29-721-739)

- Provides **structure** for **State + local governments** when preparing, preventing, responding + recovering from natural or manmade events
- Defines **roles** for **State + local government + nongovernmental organizations**



Overview



Disaster Act...

- Provides **guidance** related to:

- Shelters
- Evacuations
- Curfews

- Financing
- Assistance
Identification
- Interstate Cooperation

- Liability Limitations
- Responder
Immunities





Parish Office of Homeland Security and Emergency Preparedness (Parish OHSEP)



Overview



Local OHSEP Director

- **Appointed** by the Parish President + commissioned by the State's Director of GOHSEP.
- Should be a **qualified + experienced emergency manager.**
- Is responsible for **coordinating** local disaster response.



Overview



Local OHSEP Director's Responsibilities

- Organize + administer + operate the **local** OHSEP.
- Create + maintain + adhere to a *Parish Emergency Operations Plan* (EOP).
- Prepare Parish for evacuation + rescue + sheltering.
- Is the **primary** point of contact between the State and Parish officials.



Overview



Local OHSEP Director's Responsibilities

- Directs **response + deployment** of **Parish agencies** & resources during an incident.
- **Alerts + advises** the **Parish citizenry**.
- **Advisor** to the chief elected **Parish official**.
- **Applies for + properly** administers specific State + Federal grants, on behalf of the **Parish's chief elected official**.



Overview



Parish Emergency Management Advisory Committee (PEMAC)

- Louisiana Disaster Act **mandates** the Parish form a PEMAC committee.
- **Purpose:**
 - To offer **advice + counsel** to the Parish President on homeland security and emergency management.
 - Ensures **planning** between Parish + municipalities is consistent.





Overview

Parish Emergency Management Advisory Committee (PEMAC)

- Meets at least **twice a year**.
- Parish President or the OHSEP Director serves as **chairperson**.
- **Functional areas** of interest include:

- Hazard Mitigation
- Emergency Preparedness
- Response

- Recovery
- Grant Requests
- Expenditure of Grant Funds



Overview



Local Emergency Planning Committee (LEPC)

- Title III of the Superfund Amendments and Reauthorization Act (SARA) requires each State to create planning districts and **appoint an LEPC** in each Parish.
- **Purpose:**
 - To **address** hazardous materials issues.
 - **Create** public awareness of **hazardous materials risks + improve community preparedness.**





Subcommittees as Defined in the Disaster Act



Overview



Regional Parish OHSEP Director's Subcommittee

- Composed of **one (1) Parish OHSEP Director** from each of the nine (9) GOHSEP Regions + the **Director of GOHSEP**.
- Provides **planning + advice** on strategic emergency management issues from a **regional perspective**.
- Representatives are **selected from among their peers** + represent their **Region**.



Overview



First Responders Subcommittee

- Composed of **emergency response professionals.**
- Provides:
 - **Law enforcement + fire service + emergency medical service + intelligence gathering + dissemination solutions.**
 - **Planning + advice** on issues identified by GOHSEP + the Unified Command Group (UCG).
- Establishes **advisory subcommittees** for specific issues when required.





Overview

Statewide Interoperability Executive Subcommittee (SIEC)

- Administers the **Louisiana Wireless Information Network (LWIN)**.
- Is composed of all appropriate **first responder + support** organizations.
- Has full authority to design + construct + administer + maintain a **statewide interoperable communications system**.
- Establishes **advisory subcommittees** as needed.



Overview



Long-Term Recovery Subcommittee

- Developing **long-term recovery planning** and **advising** on opportunities that will achieve **sustainability efforts** within **affected localities**
- Establishing **advisory subcommittees** for specific issues
- Consist of **multiple state agencies** that cover all **six recovery support functions (RSF)**



Overview



Intrastate Mutual Aid Subcommittee (IMAC)

- IMAC is a system of **parish-to-parish** mutual aid for Parishes that **do not** have existing mutual aid agreements.
- IMAC **maximizes** response capabilities for emergency personnel to respond to **all hazard incidents** utilizing Parish-owned equipment + material + personnel resources.





Governor's Office of Homeland Security and Emergency Preparedness (GOHSEP)





GOHSEP Mission

To **lead** and **support** Louisiana and its citizens in the **preparation** for, **response** to and **recovery** from all emergencies and disasters.

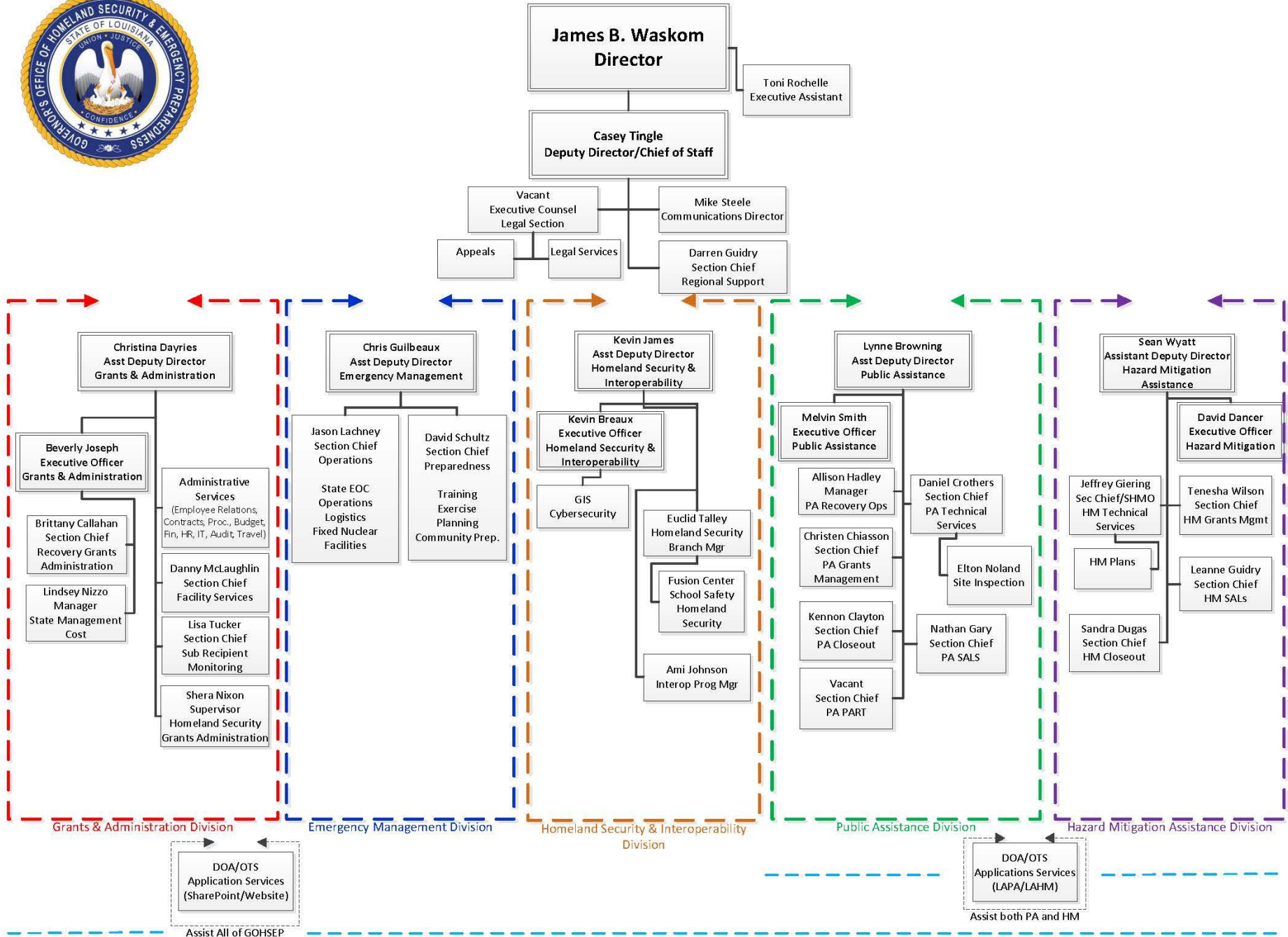




GOHSEP Structure

- **Executive Office**
- *5 - Divisions:*
 - **Grants and Administration**
 - **Emergency Management**
 - **Homeland Security and Interoperability**
 - **Public Assistance**
 - **Hazard Mitigation Assistance**





Overview



GOHSEP

- **Leads and supports** Louisiana and its citizens ...
 - In the **preparation** for + **prevention** of + **response** to + **recovery** from + **mitigation** against all emergencies and disasters.
- **Operates and manages** ...
 - The State Emergency Operations Center (SEOC) during an **emergency event**.



Overview



GOHSEP

- **Coordinates** support to Applicants for **pre-disaster + post-disaster** Federal grant funding.
- **Works with** partners from State + Federal **agencies + Parish + local governments + nongovernmental organizations + businesses** on emergency preparedness initiatives.



Overview



GOHSEP: Preparedness

- Develops + maintains the State EOP.
- Provides **technical assistance** to **local governing authorities** for Parish-related plans.
- Provides **training + exercises + stakeholder outreach**.
- Serves as the State Administrative Agent (SAA) for management of the State's **preparedness (non-disaster) grant programs**.



Overview



GOHSEP: **Response**

- Plays a **significant role** in the:
 - **Activation + staffing** of the State EOC.
 - **Coordination** of State + Federal Emergency Support Functions (ESFs).
 - Management + response to **requests** from State + local governments.



Overview



GOHSEP: **Recovery**

- Presidential-disaster **declaration process**.
- **Coordinates** the Preliminary Damage Assessment (PDA) process.
- Directs the recovery of **16 open disasters**.
- Manages **1,500 unique Public Assistance (PA) Applicants** + approximately **\$16.2 billion** in Federal recovery dollars.
- Processes more than **\$17 million in reimbursements weekly**.



Overview



GOHSEP: **Mitigation**

- **Creates + maintains** the *State Hazard Mitigation Plan* (SHMP).
 - SHMP identifies the **most likely threats** to Louisiana + prescribes **mitigation strategies** to address.
- Provides **technical assistance** to **local governments** in developing their hazard mitigation plans.
- Administers grant **funding** through FEMA's Hazard Mitigation Assistance (HMA) programs.



Overview



National Incident Management System (NIMS)

- Provides **standardized organizational structures** that improve integration + connectivity among jurisdictions + disciplines.
- Federal homeland security and emergency preparedness **grants require** State + local agencies to be **NIMS compliant**.
- Agencies **MUST** complete specific **training, education and planning requirements**.





Prepare





Prepare

Pre-Disaster Preparation

- Includes **review + revision** of the Parish EOP.
- Focuses on:
 - **Threats + Hazards Identification + Risk Assessment (THIRA)**
 - **Mutual Aid Agreements**
 - **Pre-disaster contracts (e.g., **debris + generators + portable shelters + fuel + food for EOC staff**)**



Prepare



Planning

- Planning + preparation are **key to timely + effective + successful** response to + recovery from a disaster.
- **Local required plans** include:
 - *Parish Emergency Operations Plan (EOP)*
 - *Parish Hazard Mitigation Plan (HMP)*





Prepare

Preparedness (Non-Disaster) Grants

- **Federal preparedness grants** provide assistance to **State + local + tribal authorities** to enhance homeland security + emergency management.
- **Types** of preparedness (non-disaster) grants:
 - **Emergency Management Performance Grant (EMPG) Program**
 - **Homeland Security Grant Program (HSGP)**
 - **Other grant opportunities**





Prepare

Emergency Management Performance Grant (EMPG)

- Provides for a **comprehensive system** of emergency preparedness for the **protection of life + property** from all hazards.





Prepare

Homeland Security Grant Program (HSGP)

- Funds a range of **preparedness activities**, including planning + training + exercises + operations + equipment.
- Is comprised of **four (4) main grant programs**:
 - **State Homeland Security Program (SHSP)**
 - **Urban Areas Security Initiative (UASI)**
 - **Operation Stonegarden (OPSG)**
 - **Nonprofit Security Grant Program (NSGP)**



Prepare



Other Grant Opportunities

- Grants are **awarded directly** to **local** fire departments to enhance abilities to protect the public + fire service personnel.
 - Assistance to Firefighters Grants (AFG)
 - Staffing for Adequate Fire & Emergency Response (SAFER) Grants
 - Assistance to Firefighters Station Construction Grants (SCG)



Prepare



Other Grant Opportunities

- Grants are **awarded directly** to **state or local** agencies to enhance abilities for preparation and response to maritime events.
 - **Port Security Grant Program (PSGP)**
- Grants are **awarded directly** to **state or local** agencies to enhance law enforcement activities.
 - **Community Oriented Policing (COPS)**





Prepare

Louisiana School Safety

- Provide State Level **program continuity** to the school districts.
 - Download: <http://gohsep.la.gov/RESOURCES/SCHOOL-SAFETY>
 - School Emergency Operations Plan (EOP) Toolkit
 - School Emergency Operations Plan (EOP) Guide
- Cursory **School Emergency Operations Plan Review**.
- Provide **Data Repository Management** for School Safety Plans, and available resources to school districts.





Prevent



Prevent



Louisiana State Analytical + Fusion Exchange (LA-SAFE)

LA-SAFE Products

- Subject profiles
- Alert Bulletins
- Threat & vulnerability assessments
- Graphics - maps, charts, time lines, etc.
- Daily reports
- Bulletins:
 - + Law Enforcement Sensitive
 - + Open Source
 - + Special Bulletins
- Suspicious Activity Report Analysis



LA-SAFE Partners

GOHSEP

EBRSO

DHS

BRPD

LSP
CYBER

HIDTA

LANG

FBI

CBP

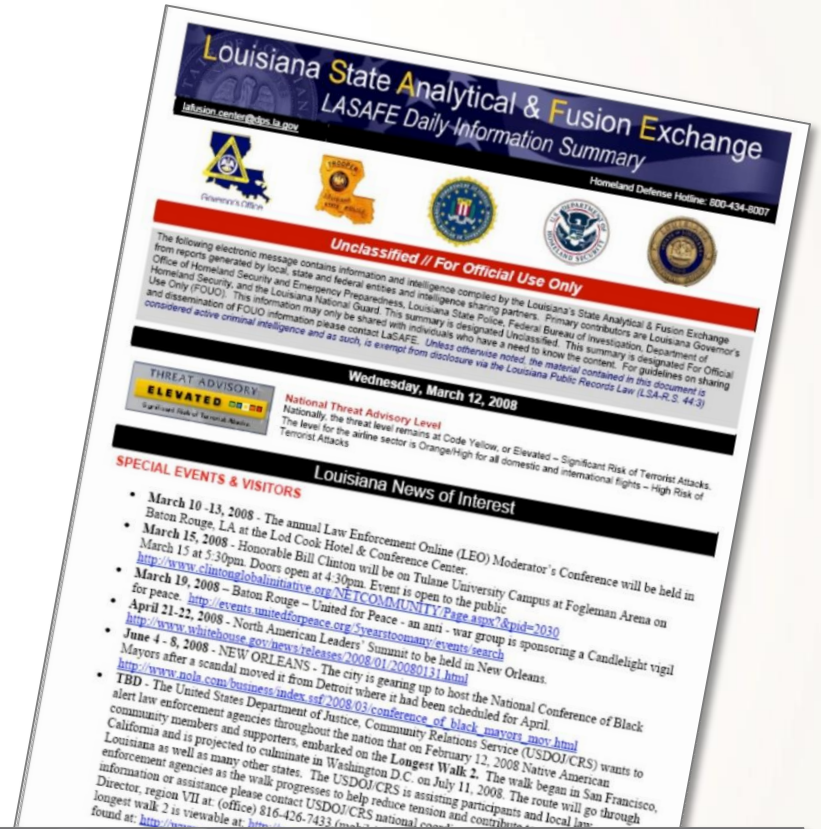
ATF



Prevent



LA-SAFE issues *Daily Information Summaries* (DISs) to more than **1,200** contacts.



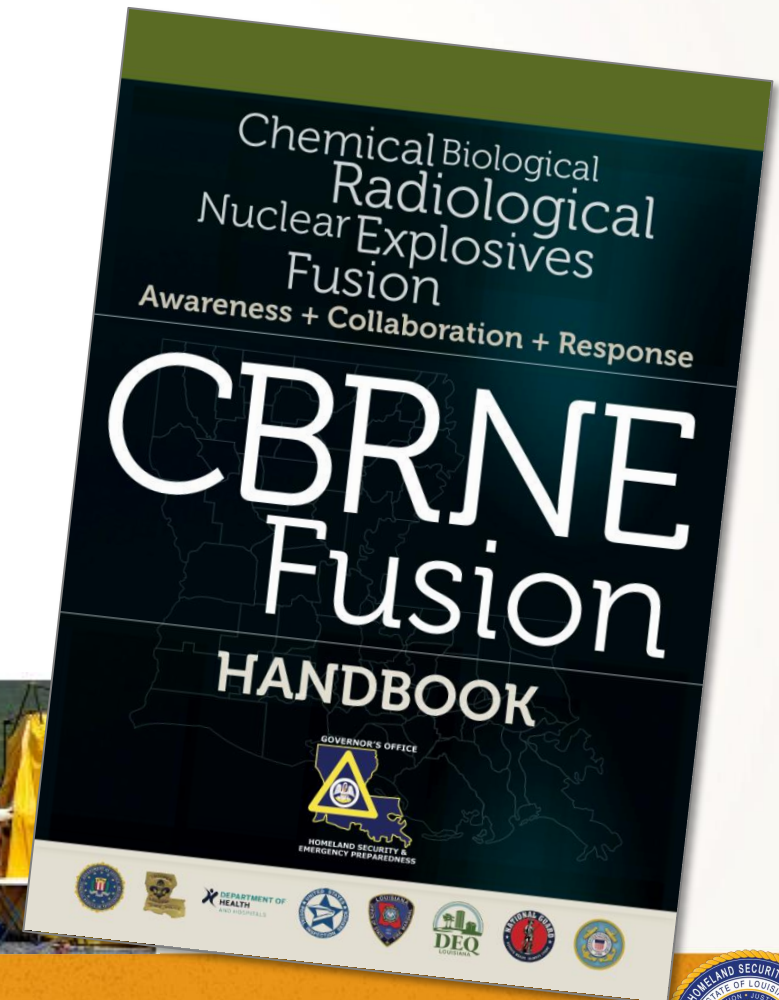
LASAFE Daily Information Summary



Prevent

CBRNE Working Group

- Provides **training** in hazardous materials protocols and how to:
 - Identify + respond;
 - Transport + test;
 - Build awareness of CBRNE threats.



Prevent



Bomb-Making Materials Awareness Program (BMAP)

- Communities are provided with **free training and educational videos** designed to **increase awareness and reporting**.
- Courses provide awareness of bomb-making activity to include **IEDs, homemade explosives, and suspicious behaviors**, as well as help **build an outreach plan** to educate communities.
- Visit: [https:// www.dhs.gov/bmap](https://www.dhs.gov/bmap) or
- Contact: OBP@HQ.DHS.GOV




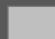


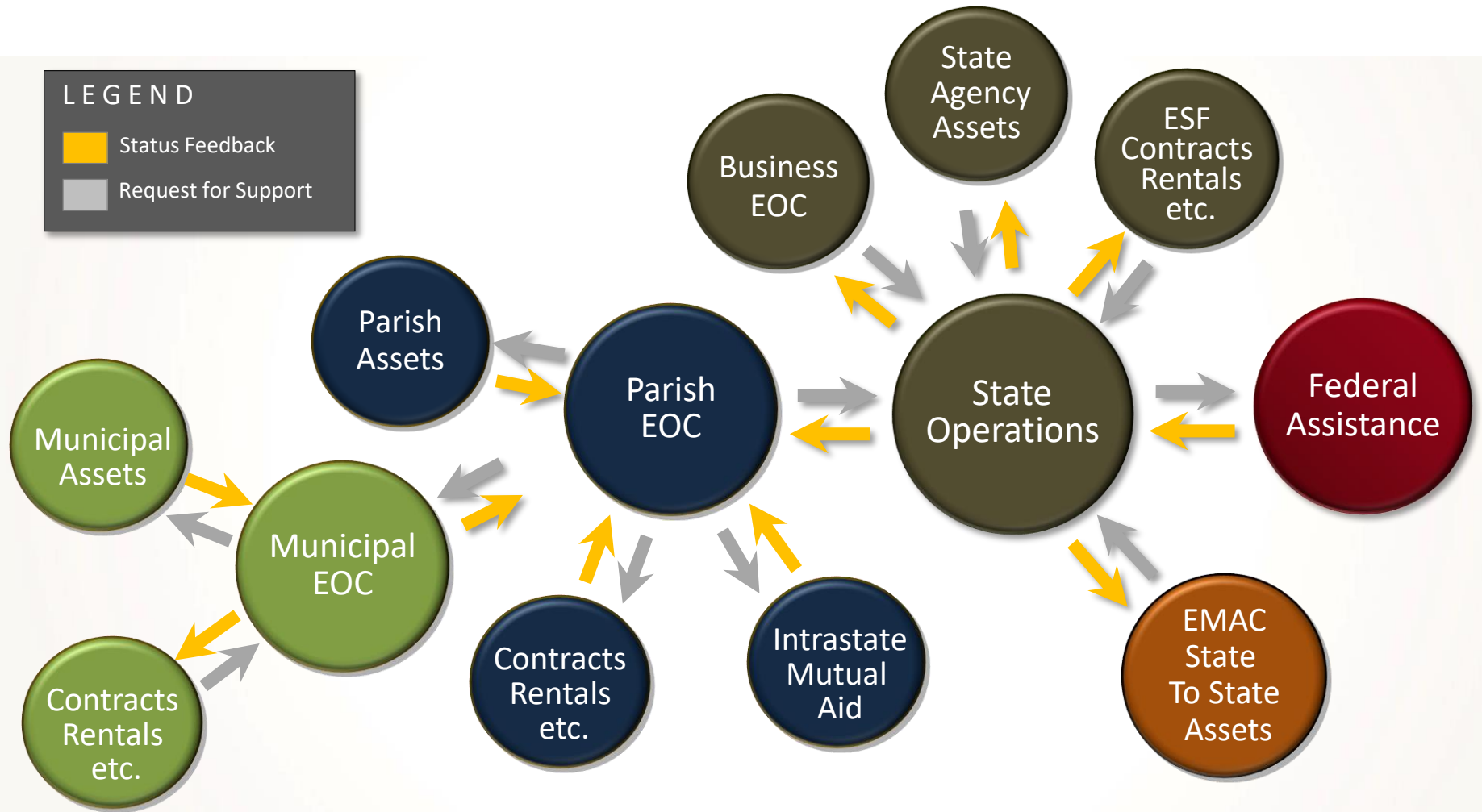
Respond



Emergency Management Process

LEGEND

-  Status Feedback
-  Request for Support





Respond

State Emergency Operations Center (SEOC)

- Is the State's **command + control center**.
- Serves as a **central operations center** for emergency response + provides support for other State agencies
+ **local governments**.
- **Assists + coordinates** all actions during an incident when the need for resources have **exceeded** local government capabilities.



Respond



Unified Command Group (UCG)

- Provides a **unified + coordinated** approach to emergency incidents.
- Members **appointed** by Executive Order of the Governor.
- State's **strategic decision-making** body for emergencies.
- **Coordinates + manages** State response activities with the **Federal government + nonprofit + faith-based + volunteer + private sector partners**.

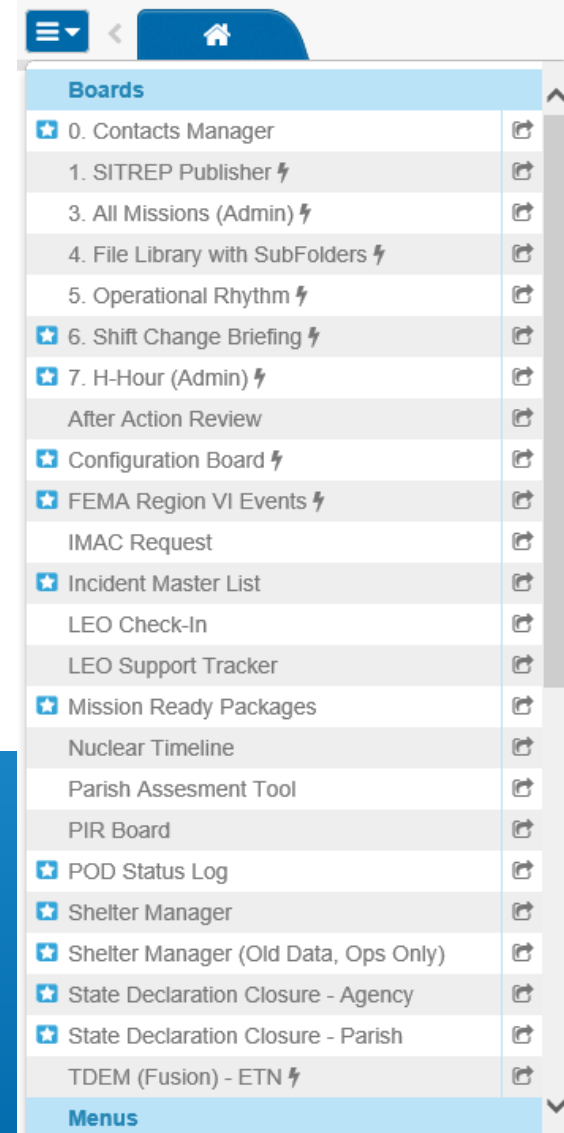


Respond



WebEOC

- Is a **secure, web-based** emergency information management application.
- Provides **operational details** from various government + public safety groups in response to an **imminent threat, emergency or disaster**.
- Serves as the **primary** means for requesting resources from the State + other Parishes.



WebEOC 8.5 Login

Username

Password

Log In

[Forgot Username/Password?](#)



LOUISIANA ELECTED OFFICERS
EMERGENCY MANAGEMENT

Respond



Unified Shelter Plan

- Parish **must** have at least **one parish run shelter** for all hazards incidents
- Parish **must** update the **shelter inventory board** in WebEOC **annually**
- Parish will determine and report their **mass care activation level** upon activation of their shelter
- Parish will maintain their **Point to Point Agreement** with the receiving parish for evacuation planning (if applicable)



Respond



Point of Distribution (POD)

- **Local authorities** play a **critical role** in the success of a POD by **pre-selecting suitable sites** before an event.
- **Local authorities** must request PODs to be opened through **WebEOC**.
- Certain **criteria should be met** warranting a POD.





Respond

Intrastate Mutual Aid Compact (IMAC)

- Provides + promotes **mutual assistance** among Parishes in the prevention of + response to + recovery from an emergency or any other event that **exceeds** a **Parish's capability or resources**.
 - Requests are processed through WebEOC.
 - Each Parish **must declare an emergency**.
 - Serves as the **legal document** for both agencies.



Respond



Emergency Management Assistance Compact (EMAC)

- A nationally adopted **mutual aid agreement** that enables **States** to share resources during disasters.
- **Requests must go through GOHSEP.**



Respond



Difference between IMAC & EMAC

- **IMAC** provides for **parish-to-parish** assistance when a mutual aid agreement between Parishes is not already in place.
- **EMAC** provides **state-to-state** assistance.



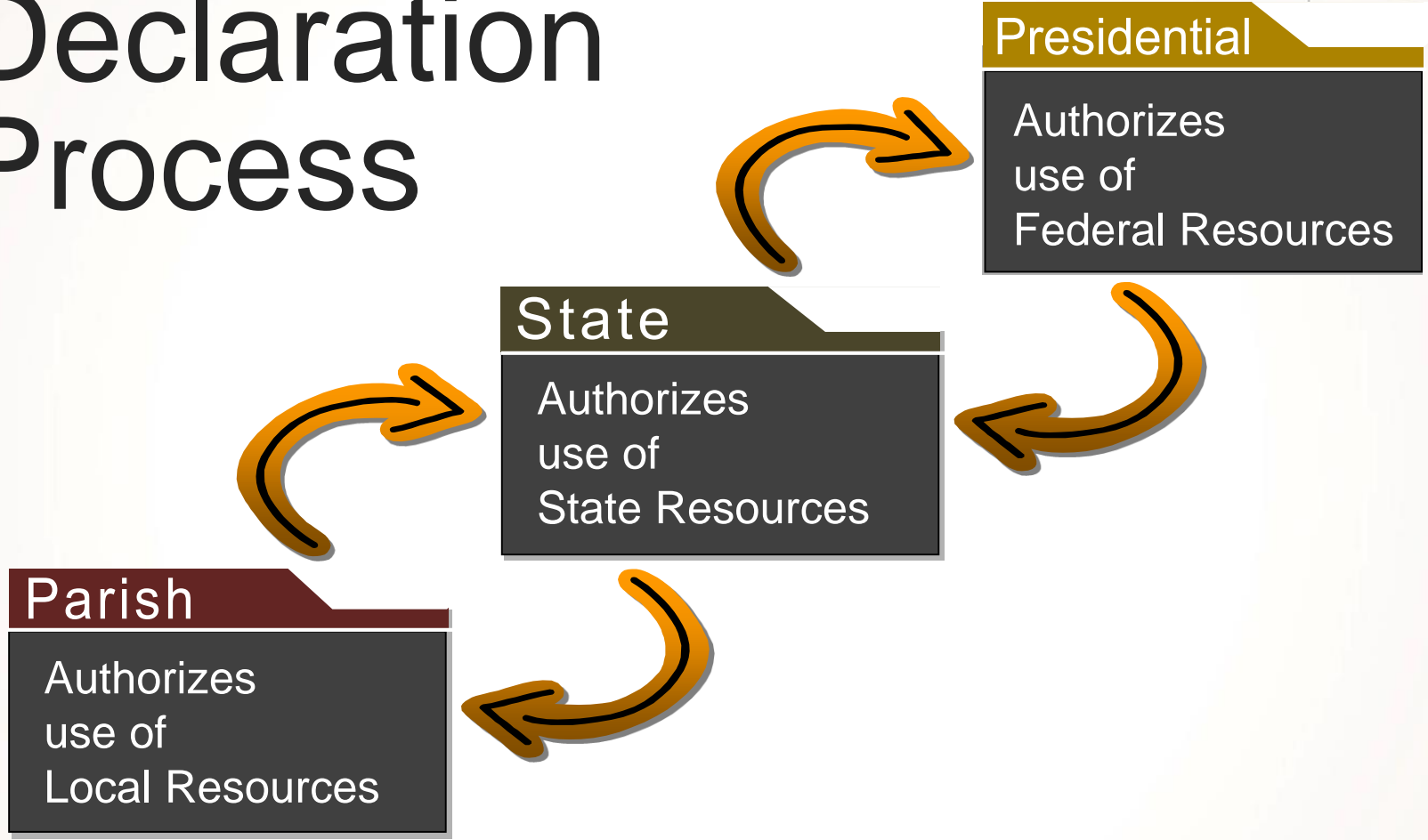


Recover





Declaration Process



Recover



Local authorities play a **significant role** in the declaration process.

The **accuracy** and **quality** of the information provided at the local level regarding **damage assessments** + their **economic impact** is critical to obtaining a Presidential declaration.



Recover



A Presidential declaration **opens the door** for Federal assistance:

- **FEMA Public Assistance (PA)**
- **FEMA Individual Assistance (IA)**
- **Direct Federal Assistance (DFA) for other Federal support**





Recover

FEMA PA WORK CATEGORIES

EMERGENCY WORK

Category A Debris Removal

Category B Emergency Protective Measures

PERMANENT WORK

Repair Restoration of Disaster-damaged Public Facilities and Property

Category C Roads + Bridges

Category D Water Control Facilities

Category E Buildings + Contents + Equipment

Category F Utilities

Category G Parks + Recreational + Other



Recover



Grantee + Subgrantee Relationship

- The State is represented by **GOHSEP**.
- GOHSEP is the **grantee**.
- **Federal assistance** from FEMA will come to **GOHSEP**.
- **Local authorities** receiving FEMA PA + Hazard Mitigation Assistance (HMA) are **subgrantees/Applicants**.





Recover

Obtain & Maintain (O & M) Insurance Requirement

- FEMA requires Applicants to **obtain + maintain** insurance **coverage** at least **equal** to the amount of the **eligible** damage to the facility receiving Federal assistance.
- **If the requirement is NOT MET:**
 - FEMA may **de-obligate** funds provided for damage sustained in the *current* disaster.
 - *Future* funding **will not be available** for the same type of peril.



Recover



Obtain & Maintain (O&M) Insurance Requirement

- If you believe you **cannot reasonably** meet the O & M requirement, **pay particular attention** to the *Insurance Commissioner's Certification* (ICC) portion of the Manual.
 - It details how the Louisiana Insurance Commissioner can **help** + the **process** for relief.



Recover



Debris Removal

- Event-related debris.
- Property + right of-ways that are the **responsibility of the Applicant.**
- It is an **Applicant's responsibility** to understand and follow all local, State & Federal regulations for debris removal + management + monitoring + operations.





Recover

Individual Assistance (IA)

- FEMA **Individuals + Households Program** (IHP) provides **financial assistance needed** as a **direct result** of a **Presidentially declared** disaster or emergency.
- Grants provide for **special + personal** needs. For example:
 - Temporary housing
 - Medical bills
 - Dental
 - Personal property (e.g. computers)
 - Funeral expenses
 - And more
- Currently the grant amount is **\$34,900 (updated annually)**.



Recover



Other Funding Opportunities

- **Small Business Administration (SBA) Disaster Loans**
 - Provides loans to **homeowners + renters + businesses + organizations** to **repair or replace** real estate + personal property + equipment + business assets damaged in a disaster.
- **Community Development Block Grants (CDBG)**
 - Is a part of the Department of Housing & Urban Development (HUD), administered through the **Louisiana Division of Administration's Office of Community Development (OCD)**.



Recover



FEMA Disaster Recovery Center (DRC)

- **Local authorities** play a **critical role** in the success of a DRC by having **potential sites pre-selected** before an event.
- Is a location where **individuals** impacted by disaster can go for **information about FEMA + other disaster assistance** programs.



Recover



Dept. of Children and Family Services: DSNAP

- **Local authorities** play a **critical role** in the success of a Disaster Subsistence Nutrition Assistance Program (DSNAP) by having **potential sites pre-selected before an event.**
- Is a location where **individuals** impacted by disaster can go for registration to receive **disaster subsistence assistance** programs.





Recover

National Disaster Recovery Framework (NDRF)

- Enables effective recovery support to disaster-impacted States (including local agencies) and Tribes through a **unified and collaborative process**. The focus is on how best to restore, redevelop and revitalize the health, social, economic, natural and environmental fabric of the impacted areas and to **build resilience**.

Recovery Support Functions (RSFs)

- 1) Community Planning and Capacity Building
- 2) Economic
- 3) Health and Social Services
- 4) Housing
- 5) Infrastructure
- 6) Natural and Cultural Resources

Coordinated Outreach to Locals

- Foster Coordination
- Facilitate problem solving
- Improve access to resources
- Identify Priorities
- Build Projects
- Track Progress



Recover



Appeals + Arbitration: **Success for YOU!**

\$1.1 BILLION in recovery assistance our Applicants would **NOT** have otherwise had.





Mitigation



Mitigation



Hazard Mitigation

- Reduces vulnerabilities so that communities are better protected from disaster impacts, **more resilient** and better prepared to face future disasters.
- Hazard mitigation **guidance & technical** assistance is provided by the ***State Hazard Mitigation Plan (SHMP)***.
- **Local** plans provide **prioritization** of mitigation projects.





Mitigation

Hazard Mitigation

- Grants are available both **pre and post** disaster for mitigation activities:

ANNUAL NON-DISASTER GRANTS

- Flood Mitigation Assistance (FMA)
- Pre-Disaster Mitigation (PDM)

POST-DISASTER FUNDING

- Hazard Mitigation Grant Program (HMGP)
 - Funding amount is set as a percentage of the PA obligation.

For every dollar spent on mitigation, **\$6 are saved** on future losses.





Resources + Tools



Resources + Tools



Alert FM

- Statewide **Redundant** Notification System
- **Accessible by each Parish OHSEP**
- Methods of Notifications
 - **FM Receivers** issued to each Parish and available to the public for purchase
 - **Smartphone App** available to receive notifications (iPhone and Android)





Resources + Tools

GIS

- **Creation of VL2**, currently in pilot phase
- Aid the Louisiana emergency response community by providing a **geospatial common operating picture**.
- VL2 is as a secure, web based GIS application that makes available GIS tools and geospatial data for **use in day to day planning, as well as situational awareness for active emergencies**



Cyber Security

- Governor's appointment of **Cybersecurity Commission**
- Developing **ESF 17 Cyber Security**





Resources + Tools

www.getagameplan.org

Louisiana.gov > Office of the Governor > GOHSEP Text Size + -

HOME

EMERGENCY PREPAREDNESS

Before

- Mitigate
- Citizen Corps
- Public Service Announcements
- People With Disabilities

During

- emergency.louisiana.gov
- Alerts & Warnings
- Evacuation

HOMELAND SECURITY

Areas of Interest...



family
PLAN

business
PLAN

mitigation
PLAN

kids
PLAN

Home
Evacuation Info
Important Numbers
En Español





1

**Put Together An
Emergency Kit »**

LOUISIANA ELECTED OFFICIALS
EMERGENCY MANAGEMENT MANUAL

PREPARE + PREVENT + RESPOND + RECOVER + MITIGATE



Resources + Tools

Public Service Announcements (PSAs)

- Public service announcements via television, radio, web and print media to include the “Pet Plan” series and the Emergency Preparedness Series



One Team, One Heartbeat

06/2017 - Louisiana GetAGamePlan: One Team, One Heartbeat
30 seconds version



Get A Game Plan App

11/2016 - Louisiana GetAGamePlan public service announcement related to Get a Game Plan App



Get A Game Plan

07/2016 - Louisiana GetAGamePlan public service announcement related to Get a Game Plan

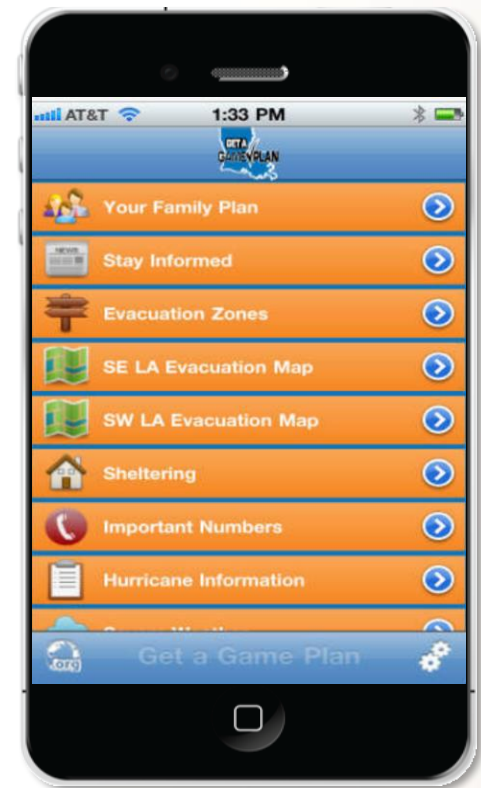


Resources + Tools

Apps



Click on below Icons to Download the App



Resources + Tools



PODCAST

- The **GOHSEP Get A Game Plan Podcast** is live.
 - Airs once a month.
 - Highlights **emergency management issues** at the local, State and Federal levels.





Resources + Tools



emergency.LOUISIANA.GOV

Prepare

Stay Informed

Contacts

Emergency Parish Contacts



PRESS RELEASE:

- No new press releases posted, please visit us back later.

ROAD CLOSURE INFORMATION



PROCLAMATIONS

No proclamation information at this time.

SHELTER INFORMATION

For shelter information contact your [Parish OHSEP](#).

STATE OFFICES CLOSURE INFORMATION

State employees should be aware of the following phone numbers to call, which will be updated with information regarding office closures:

Vital Updates

National Hurricane Center

Louisiana Business Emergency Operations Center (LA BEOC)

National Weather Service



LOUISIANA ELECTED OFFICIALS
EMERGENCY MANAGEMENT MANUAL

PREPARE + PREVENT + RESPOND + RECOVER + MITIGATE

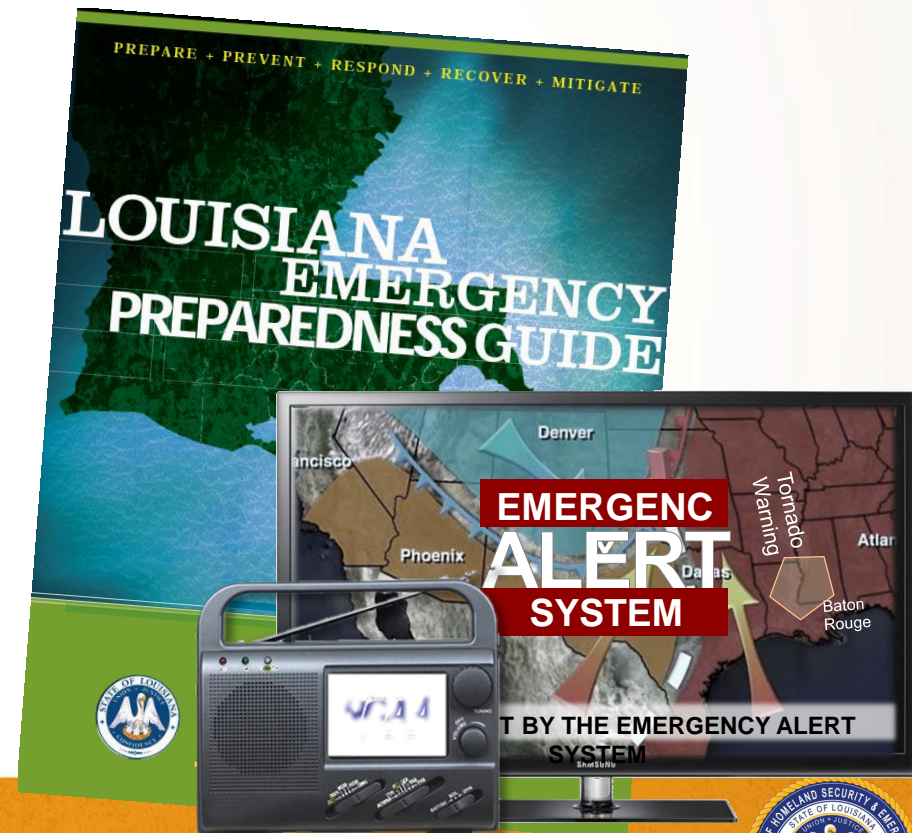




Resources + Tools

Emergency Public Information

- Louisiana **Emergency Preparedness Guides**
- The State's **Joint Information Center (JIC)**
- The Louisiana **Emergency Alert System (EAS) & NOAA Weather Radio**



Resources + Tools



LA Business EOC: www.labeoc.org

- **State Public-Private Partnership**
- An **outlet for the private sector** to:
 - **PROVIDE** information
 - **OBTAIN** information
- An opportunity for businesses to:
 - **Support the State** when traditional resources are exhausted.
 - **Help one another** through the network of associations.
- Located at the University of Louisiana, Lafayette



Resources + Tools

Outreach Literature

- Produced + distributed **67** different **public information + procurement + training tools.**



Resources + Tools



- Virtual Louisiana 2

gohsep.la.gov/RESOURCES/VL2

- Louisiana Business
Emergency Operations
Center (LA BEOC)

labeoc.org

- Louisiana Public Assistance (LAPA)

louisianapa.com

- Louisiana Hazard Mitigation (LAHM)

louisianahm.com

- Get A Game Plan website

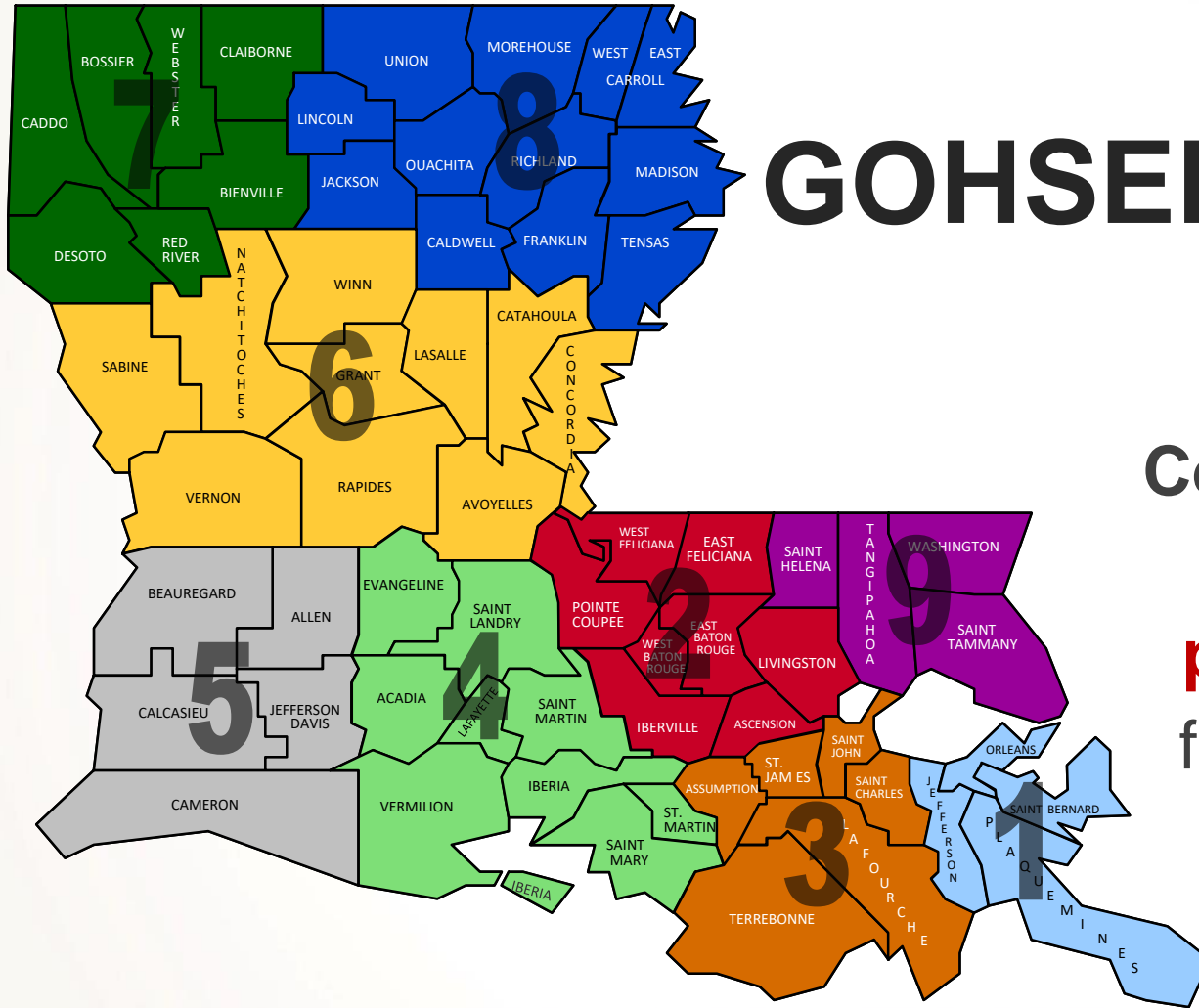
getagameplan.org

- Reporting Suspicious Activity

1-800-434-8007

<https://dpsweb.dps.louisiana.gov/suspicious.nsf/WebForm?OpenForm>





GOHSEP Regions

Regional Coordinators (RCs) are the **primary points of contact** for Parish officials.



Closing Comments

Points of Contact



James Waskom, Director
225-925-7345 james.waskom@la.gov

Casey Tingle, Chief of Staff
225-925-7345 casey.tingle@la.gov

Christina Dayries, Asst. Deputy Director, Grants & Administration
225-358-5599 christina.dayries@la.gov

Chris Guilbeaux, Asst. Deputy Director, Emergency Management
225-925-7333 christopher.guilbeaux@la.gov

Kevin James, Asst. Deputy Director, Homeland Security & Interoperability
225-925-4114 kevin.james@la.gov

Lynne Browning, Asst. Deputy Director, Public Assistance
225-338-7342 lynne.browning.@la.gov

Sean Wyatt, Asst. Deputy Director, Hazard Mitigation Assistance
225-389-2403 sean.wyatt@la.gov



Questions + Answers

