

HIRA/THIRA Listening Session NEMA Resilience Committee

10/02/2024

Risk Analysis, Planning & Information Directorate (RAPID)



FEMA

FEMA

Agenda

- Welcome / Opening Remarks
- Setting the Stage: The Threat and Hazard Identification and Risk Assessment (THIRA) versus Hazard Identification and Risk Assessment (HIRA)
- Overview: RAND Assessment and Recommendations
- Discussion: Proposed Actions & Impacts
- Q&A



THIRA/SPR versus HIRA/HMP

	HIRA / HMP	THIRA/SPR
OUTCOMES	The HMP enables SLTTs* to engage stakeholders prioritize limited resources toward mitigation strategies to reduce risks from natural hazards that threaten people, property, housing, infrastructure, economies, as well as natural and cultural resources.	The THIRA/SPR helps SLTTs understand what they need to prepare for and how, leveraging investments in planning, organization, equipment, training, and exercises to build and sustain capabilities across all mission areas (Response, Recovery, Mitigation and Preparedness) .
RISK ASSESSMENT	HMP risk assessments summarize all natural hazards that can affect the planning area. The summary must include information on location, extent, and previous occurrences for each natural hazard. The risk assessment must include an analysis of the potential impacts of hazards and describe vulnerable people, property, housing, infrastructure, economies, as well as natural and cultural resources.	During the risk assessment (THIRA) process, SLTTs develop a list of most challenging threats and hazards that could affect them using a combination of experience, forecasting, subject matter expertise, and other available resources. Using standardized impact language, they then describe and estimate the quantifiable impacts from those threats and hazards, and set targets that reflect the level of capability they realistically seek to build and sustain within a certain period of time.



*SLTTs = States, local tribal and territory governments

THIRA/SPR versus HIRA/HMP

Mitigation Planning Process	THIRA-SPR Process
Mitigation Planning Step 1: Organize the Planning Process and Resources	Involve the Whole Community throughout each step of the THIRA/SPR process
<i>Mitigation Planning Step 2. Assess Risks</i>	<i>THIRA Step 1: Identify the Threats and Hazards of Concern</i> <i>THIRA Step 2: Give the Threats and Hazards Context</i>
Mitigation Planning Step 3. Develop a Mitigation Strategy	THIRA Step 3: Establish Capability Targets
	SPR Step 1: Assess Capabilities and SPR Step 2: Identify and Address Capability Gaps
	SPR Step 2: Identify and Address Capability Gaps
Mitigation Planning Step 4. Adopt and Implement the Plan	THIRA/SPR Process



RAND Recommendations for Alignment

Recommendations

1. Align timelines for the assessment.
2. Align data collection processes for the assessments to reduce SLTT burden
3. Develop a consistent approach for addressing climate change in THIRA and HMPs.
4. More purposely include equity in THIRA and HMP processes.
5. Provide additional tools and guidance to help SLTTs address emerging risk.
6. Use risk matrices to help SLTTs prioritize among diverse threats and hazards.
7. Improve measurement of burden.

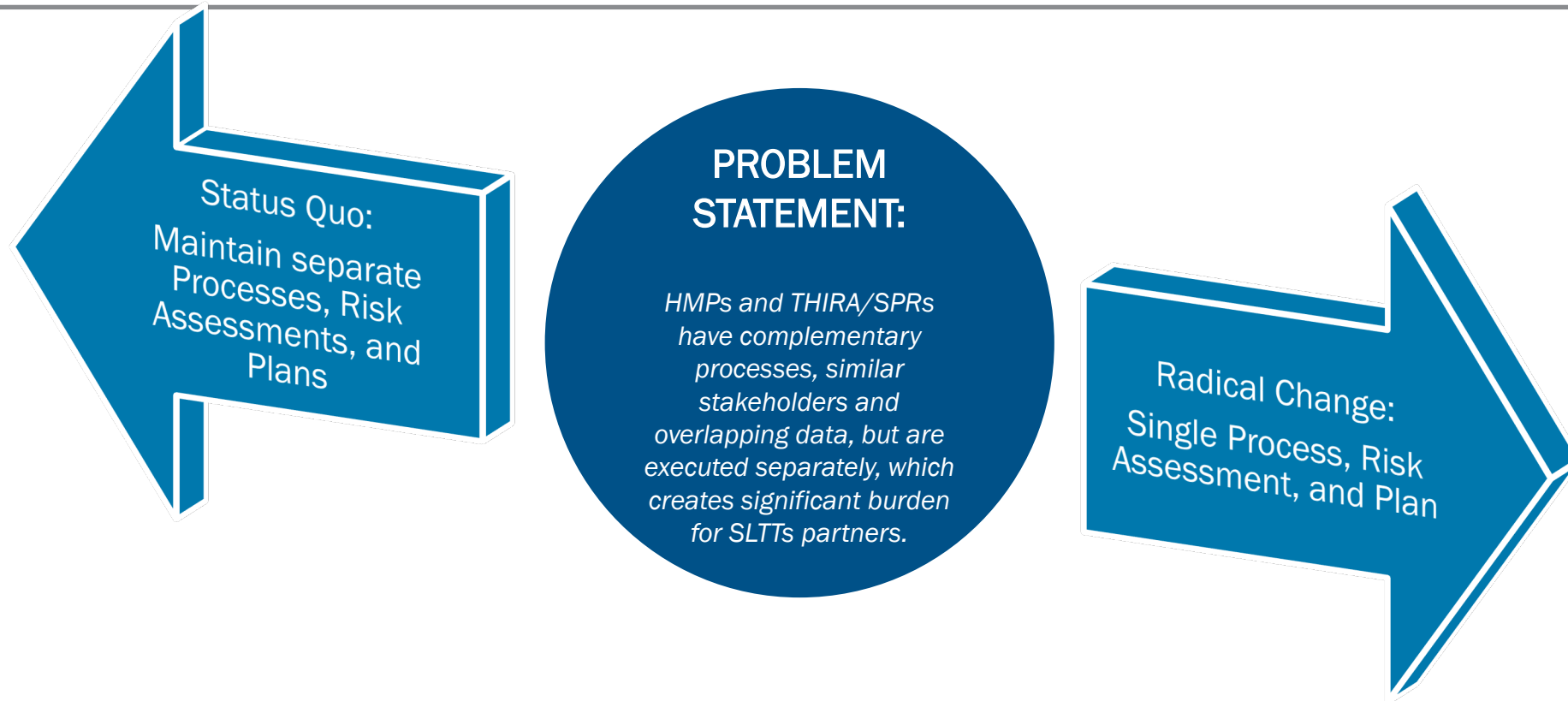
[RAND Report: Improving Assessments in Emergency Management: Analysis of the Threat and Hazard Identification and Risk Assessment and the Hazard Identification and Risk Assessment](#) (RAND, March 27, 2024)



FEMA

Federal Emergency Management Agency

Alignment of SPR and HMP Risk Assessments



Challenge: How to streamline THIRA/SPR and HIRA/HMP in a way that reduces burden on SLTT partners, while balancing the requirements outlined in law, regulation, and established doctrine.



FEMA

Proposed Actions for Alignment

Proposed Actions	RAND Recommendation Addressed	Impact
<p>Unified Timeline: Risk assessment submission and review timelines aligned (Current: HMPs = 5 years; THIRA = 3 years).</p> <p>Continue to require the annual capability assessment and SPR and continue to require the five-year update to HMPs.</p>	<p>1</p>	<ul style="list-style-type: none"> • Reduced level of effort / burden. • Increase alignment of data between processes
<p>Streamline Processes: Customer creates one risk assessment one time to meet the needs of the SPR and HMP requirements.</p> <p>Revised Data Collection System: Unified data collection system that includes all the necessary elements to meet the risk assessment requirements for both THIRA/SPR and HMPs.</p>	<p>2, 3</p>	<ul style="list-style-type: none"> • Reduced level of effort / burden (may be higher in short term). • Improve value of risk assessments to inform the SPR and HMP, • Increase alignment of data between processes.



FEMA

Possible Actions to Address Recommendations

Possible Actions	RAND Recommendation Addressed	Impact
<p>Joint Tools, Training & Technical Assistance for SLTTs: Develop and promote joint tools, training and guidance, such as risk prioritization matrices, that can be utilized by SLTTs to align risk assessments.</p>	<p>4, 5, 6</p>	<ul style="list-style-type: none"> • Improve value of risk assessments to inform the SPR and HMP. • Promote climate change, equity, and emerging risk considerations in assessments and planning. • On its own, does not ensure alignment or decreased burden.
<p>Review Burden Methodologies: Review proposed changes for impacts to burden estimates and review methods of collecting burden information for greater accuracy.</p>	<p>7</p>	<ul style="list-style-type: none"> • More accurate estimates of burden • Does not ensure alignment or decreased burden.



FEMA

Discussion / Q&As

- What are barriers or constraints are States, tribes and locals facing that we should consider as we look to modify these processes?
- What does an ideal combined risk assessment – to cover these two processes – look like from the SLTT perspective? What are the benefits/risks?
- What other actions should FEMA consider to address the issues identified in the RAND report?
- What information is the most valuable from the THIRA/SPR and HMP risk assessments to inform SLTT preparedness and mitigation activities?
- What is the best way to engage the right stakeholders about possible changes to these assessments?



Questions?



FEMA